



# EUTELSAT APPROVED ANTENNAS

TSS – L. ROSSI – G. YATOU

March 2025

# WHY THIS PRESENTATION?

- Most clients who want to transmit via our space segment do not know which terminal to use/buy.
- This presentation will help to share some guidance with your prospects/clients.
- Using this presentation as a benchmark of Eutelsat approved antennas will contribute to reduce the interferences we are often facing.
- **This presentation is split in several categories, according to the antenna type (transportable, fixed, maritime, interactive terminals, aircraft and flat) and to the service type (Generic or specific to KONNECT or ADVANCE). The Classification of the antenna (Type Approved or Characterized) is given on every page.**
- The complete list can be found online on [www.eutelsat.com](http://www.eutelsat.com) section “Support” → “Earth stations” → “Eutelsat Approved Equipment” (<https://www.eutelsat.com/en/support/earth-stations-documentation-equipment.html?#certified-equipment>).
- All the antennas are approved according to ESOG 120 (<https://www.eutelsat.com/files/contributed/satellites/pdf/esog120.pdf>), verifying the conformity to **EESS502 (or EESS503 for Interactive Terminals)**.  
**The EESS books gathers the Earth Station minimum technical and operational requirements to be approved “standard”**  
(<https://www.eutelsat.com/files/PDF/support/EESS-502.pdf> ; <https://www.eutelsat.com/files/PDF/support/EESS-503.pdf>).

## **IMPORTANT NOTE**

We have a more comprehensive internal database with additional antennas which cannot be formally certified, so they are not in the public list BUT can be used in some circumstances and under specific operational conditions.

→ Please contact the Esapproval team for any additional information  
[esapproval@eutelsat.com](mailto:esapproval@eutelsat.com)

# WEB LINKS TO THE DOCUMENTATION

## Generic (whole Fleet):

1- Type Approvals - Generic

<https://www.eutelsat.com/files/contributed/satellites/pdf/typeapproval.pdf>

2- Characterizations - Generic

<https://www.eutelsat.com/files/PDF/support/Characterized-Antennas.pdf>

## Dedicated to specific services:

3- Eutelsat Broadband Services (KONNECT & ADVANCE) -Type Approvals and Characterizations

[https://www.eutelsat.com/files/contributed/support/pdf/Eutelsat\\_Broadband\\_Services.pdf](https://www.eutelsat.com/files/contributed/support/pdf/Eutelsat_Broadband_Services.pdf)

4- Eutelsat Interactive Services – Type Approvals and Characterizations

[https://www.eutelsat.com/files/contributed/support/pdf/BOOK\\_IST\\_Services.pdf](https://www.eutelsat.com/files/contributed/support/pdf/BOOK_IST_Services.pdf)

Note: the antennas which are approved for Generic use, may be used in specific Broadband services as far the BUC and LNB would be adapted to KONNECT or ADVANCE modem.

# SUMMARY

## 1. Transportable / Drive-Away

- a. Generic
- b. Broadband

## 2. Transportable / Fly-Away

- a. Generic
- b. Broadband

## 3. VSAT - Fixed antennas

- a. Generic
- b. Broadband

## 4. Maritime antennas

- a. Generic
- b. Broadband

## 5. Interactive Satellite Terminals

## 6. Aircraft antennas

## 7. Flat antennas

# TRANSPORTABLE : *DRIVE-AWAY*

*a) Generic antennas*

# TRANSPORTABLE - GENERIC

## Drive-away antennas / DSNG

NAY-199K

- Manufacturer : Japan Radio Co, Ltd
- Tx Frequency Band: 13.75 – 14.50 GHz
- Rx Frequency Band : 10.95 – 12.75 GHz
- Tx Gain : 36.5 dBi
- G/T : 11.5 dB/K
- HPA max : 80W
- Diameter : 0.59 m equivalent
- Characterized

# TRANSPORTABLE - GENERIC

## Drive-away antennas / DSNG

10Ku

- Manufacturer : ERA Technology Limited
- Tx Frequency Band: 14.00 – 14.50 GHz
- Rx Frequency Band : 10.95 – 12.75 GHz
- Tx Gain : 42.8 dBi
- Diameter : 1 m
- Type Approved (EA-A005)





# TRANSPORTABLE - GENERIC

## Drive-away antennas / DSNG

10KuS

- Manufacturer : ERA Technology Limited
- Tx Frequency Band: 13.75 – 14.50 GHz
- Rx Frequency Band : 10.70 – 12.75 GHz
- Tx Gain : 42.7 dBi
- Diameter : 1 m
- Type Approved (EA-A022)



# TRANSPORTABLE - GENERIC

## Drive-away antennas / DSNG

### EXPLORER 8100 Ku

- Manufacturer : Thrane & Thrane A/S trading as COBHAM Satcom
- Tx Frequency Band: 13.75 – 14.50 GHz
- Rx Frequency Band : 10.70 – 12.75 GHz
- Tx Gain : 41.4 dBi
- G/T : 19.4 dB/K
- HPA max : BUC 50W maximum
- Diameter : 1 m
- Characterized

END OF LIFE



# TRANSPORTABLE - GENERIC

## Drive-away antennas / DSNG

### Cobham EXPLORER 7100 MB KU

- Manufacturer : COBHAM
- Tx Frequency Band: 13.75 - 14.50 GHz
- Rx Frequency Band : 10.70 - 12.75 GHz
- Tx Gain : 41.9 dBi
- G/T : 19.4 dB/K
- HPA max : 40W maximum
- Diameter : 1 m
- Characterized



# TRANSPORTABLE - GENERIC

## Drive-away antennas / DSNG

SkyRAY Compact 1500

SkyRAY Compact 1500 Plus

SkyRAY MAS 1500

- Manufacturer : ND SatCom GmbH
- Tx Frequency Band: 13.75 – 14.50 GHz
- Rx Frequency Band : 10.95 – 12.75 GHz
- Tx Gain : 43.8 dBi
- G/T : 23.9 dB/K
- HPA max : 400W maximum
- Diameter : 1.2 m
- Characterized



# TRANSPORTABLE - GENERIC

## Drive-away antennas / DSNG

### FlyDrive 120

- Manufacturer : Vislink Communications Ltd
- Tx Frequency Band: 13.75 – 14.50 GHz
- Rx Frequency Band : 10.70 – 12.75 GHz
- Tx Gain : 43.1 dBi
- G/T : 17.7 dB/K
- HPA max : 400W maximum
- Diameter : 1.2 m
- Characterized

END OF LIFE



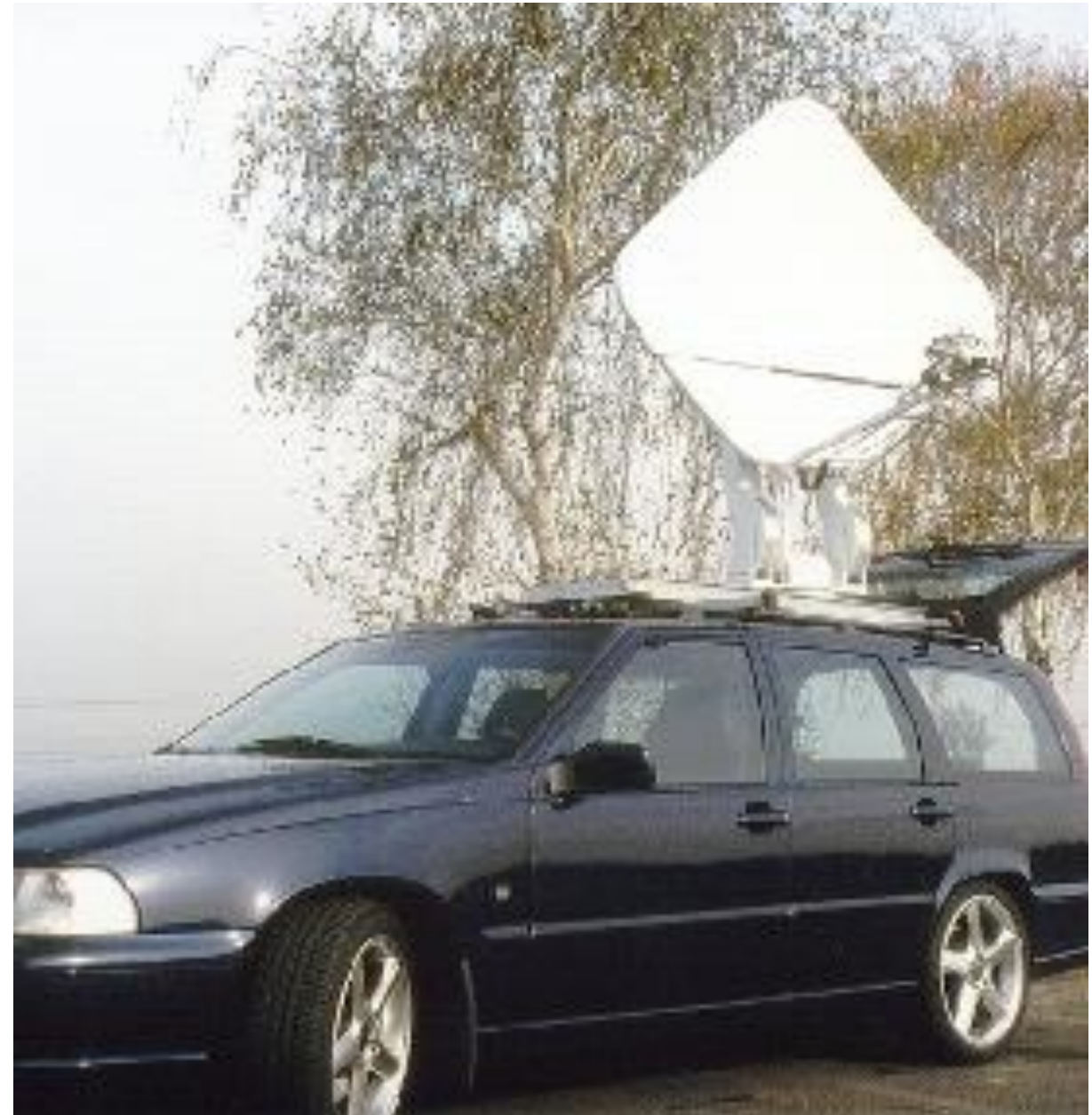
# TRANSPORTABLE - GENERIC

## Drive-away antennas / DSNG

12Ku Diamond

Approved with Cobham/Era reflector

- Manufacturer : CTS – Cobham Technical Services
- Tx Frequency Band: 13.75 – 14.50 GHz
- Rx Frequency Band : 10.70 – 12.75 GHz
- Tx Gain : 44.0 dBi
- Diameter : 1.2 m
- Type Approved (EA-A017)



## TRANSPORTABLE - GENERIC

### Drive-away antennas / DSNG

C-COM iNetVu 1201 (2 ports feed)

- Manufacturer : C-COM Satellite Systems
- Tx Frequency Band: 14.00 – 14.50 GHz
- Rx Frequency Band : 10.70 – 12.75 GHz
- Tx Gain : 43.8 dBi
- HPA max : 40W
- Diameter : 1.2 m
- Characterized



# TRANSPORTABLE - GENERIC

## Drive-away antennas / DSNG

### SVS SDC120

- Manufacturer : SVS SATELLITE SYSTEMS
- Tx Frequency Band: 13.75 – 14.50 GHz
- Rx Frequency Band : 10.70 – 12.75 GHz
- Tx Gain : 43.6 dBi
- G/T : 22.0 dB/K
- HPA max : 400W
- Diameter : 1.2 m
- Characterized





# TRANSPORTABLE - GENERIC

## Drive-away antennas / DSNG

D120M

- Manufacturer : PROSAT SOLUTIONS GmbH
- Tx Frequency Band: 13.75 – 14.50 GHz
- Rx Frequency Band : 10.70 – 12.75 GHz
- Tx Gain : 43.6 dBi
- G/T : 22.0 dB/K
- HPA max : 400W
- Diameter : 1.2 m
- Characterized



# TRANSPORTABLE - GENERIC

## Drive-away antennas / DSNG

### EXPLORER 8120

- Manufacturer : Thrane & Thrane A/S trading as COBHAM Satcom
- Tx Frequency Band: 13.75 – 14.50 GHz
- Rx Frequency Band : 10.70 – 12.75 GHz
- Tx Gain : 42.9 dBi
- G/T : 20.8 dB/K
- HPA max : BUC 50W maximum
- Diameter : 1.2 m
- Characterized

END OF LIFE



# TRANSPORTABLE - GENERIC

## Drive-away antennas / DSNG

### SMP 125 DA

- Manufacturer : Satmission AB
- Tx Frequency Band: 13.75 – 14.50 GHz
- Rx Frequency Band : 10.70 - 12.75 GHz
- Tx Gain : 44.0 dBi
- G/T : 20.7 dB/K
- HPA max : 400W
- Diameter : 1.20m H x 1.25m V
- Characterized



# TRANSPORTABLE - GENERIC

## Drive-away antennas / DSNG

### ERA 15Ku(S)

- Manufacturer : ERA Technology Limited
- Tx Frequency Band: 13.75 – 14.50 GHz
- Rx Frequency Band : 10.95 – 12.75 GHz
- Tx Gain : 46 dBi
- Diameter : 1.5 m
- Type Approved (EA-A004)



# TRANSPORTABLE - GENERIC

## Drive-away antennas / DSNG

### SVS SDC150

- Manufacturer : SVS SATELLITE SYSTEMS
- Tx Frequency Band: 13.75 – 14.50 GHz
- Rx Frequency Band : 10.70 – 12.75 GHz
- Tx Gain : 45.5 dBi
- G/T : 22.6 dB/K
- HPA max : 400W
- Diameter : 1.5 m
- Characterized



# TRANSPORTABLE - GENERIC

## Drive-away antennas / DSNG

1.5 – meter SMK-LT

- Manufacturer : Vertex RSI
- Tx Frequency Band: 13.75 – 14.50 GHz
- Rx Frequency Band : 10.70 – 12.75 GHz
- Tx Gain : 45.7 dBi
- Diameter : 1.5 m
- Type Approved (EA-A016)



# TRANSPORTABLE - GENERIC

## Drive-away antennas / DSNG

### FlyDrive 150

- Manufacturer : Vislink Communications Ltd
- Tx Frequency Band: 13.75 – 14.50 GHz
- Rx Frequency Band : 10.70 – 12.75 GHz
- Tx Gain : 45.6 dBi
- HPA max : 400W maximum
- Diameter : 1.5 m
- Characterized

END OF LIFE



# TRANSPORTABLE - GENERIC

## Drive-away antennas / DSNG

RM150

- Manufacturer : Holkirk Communications Ltd
- Tx Frequency Band: 13.75 – 14.50 GHz
- Rx Frequency Band : 10.70 – 12.75 GHz
- Tx Gain : 45.0 dBi
- G/T : 21.5 dB/K
- HPA max : 400W maximum
- Diameter : 1.5 m
- Characterized





# TRANSPORTABLE - GENERIC

## Drive-away antennas / DSNG

### D150M

- Manufacturer : PROSAT SOLUTIONS GmbH
- Tx Frequency Band: 13.75 – 14.50 GHz
- Rx Frequency Band : 10.70 – 12.75 GHz
- Tx Gain : 45.5 dBi
- G/T : 22.6 dB/K
- HPA max : 400W
- Diameter : 1.5 m
- Characterized



# TRANSPORTABLE - GENERIC

## Drive-away antennas / DSNG

### SkyRAY MAS 1900

- Manufacturer : NDSwed
- SatCom GmbH/Cobham
- Tx Frequency Band: 13.75 – 14.50 GHz
- Rx Frequency Band : 10.95 – 12.75 GHz
- Tx Gain : 45.4 dBi
- HPA max : 750W maximum
- Diameter : 1.5 m
- Characterized



# TRANSPORTABLE - GENERIC

## Drive-away antennas / DSNG

### PDA 150 Drive News

- Manufacturer : PALS
- Tx Frequency Band: 13.75 – 14.50 GHz
- Rx Frequency Band : 10.70 – 12.75 GHz
- Tx Gain : 43.9 dBi
- G/T : 23 dB/K
- HPA max : 400W
- Diameter : 1.5m x 1.35m
- Characterized



# TRANSPORTABLE - GENERIC

## Drive-away antennas / DSNG

### SMP 155 DA

- Manufacturer : Satmission AB
- Tx Frequency Band: 13.75 – 14.50 GHz
- Rx Frequency Band : 10.70 - 12.75 GHz
- Tx Gain : 45.1 dBi
- G/T : 22.6 dB/K @ 19.7 GHz
- HPA max : 400W
- Diameter : 1.54m H x 1.39m V
- Characterized



# TRANSPORTABLE - GENERIC

## Drive-away antennas / DSNG

### 2.4 DMK

- Manufacturer : Vertex RSI
- Tx Frequency Band: 13.75 – 14.50 GHz
- Rx Frequency Band : 10.95 – 12.75 GHz
- Tx Gain : 49 dBi
- Diameter : 2.4 m
- Type Approved (EA-A006)



# TRANSPORTABLE - GENERIC

## Drive-away antennas / DSNG

### 2.4 SMK-LT

- Manufacturer : VERTEX RSI
- Tx Frequency Band: 13.75 – 14.50 GHz
- Rx Frequency Band : 10.70 – 12.75 GHz
- Tx Gain : 49.1 dBi
- Diameter : 2.4 m
- Type Approved (EA-A032)



# TRANSPORTABLE : *DRIVE-AWAY*

## *b) Broadband antennas*

# TRANSPORTABLE - BROADBAND

## Drive-away antennas / DSNG

### IPCopter with ViaSat Surfbeam 2

- Manufacturer : IPCopter GmbH & Co. KG
- Tx Frequency Band: 29.50 – 30.00 GHz
- Rx Frequency Band : 19.70 - 20.20 GHz
- Tx Gain : 44.2 dBi
- HPA max : 4W maximum
- Diameter : 0.72m equivalent (0.75H X 0.72Vm)
- Type Approved (EB-004)





# TRANSPORTABLE - BROADBAND

## Drive-away antennas / DSNG

MVA75 VSAT with Viasat eTRIA

- Manufacturer : Neta Elektronik San.Tic.A.
- Tx Frequency Band: 29.50 – 30.00 GHz
- Rx Frequency Band : 19.70 - 20.20 GHz
- Tx Gain : 44.5 dBi
- G/T : 17.7 dB/K
- HPA max : 3W maximum
- Diameter : 0.74 m
- Characterized (EB-054)



## TRANSPORTABLE - BROADBAND

### Drive-away antennas / DSNG

75MP1201832 with Feed Model using e-Tria 3W

- Manufacturer : Vislink Technologies
- Tx Frequency Band: 29.50 – 30.00 GHz
- Rx Frequency Band : 19.70 – 20.20 GHz
- Tx Gain : 45.3 dBi
- G/T : 17.5 dB/K
- HPA max : 3W maximum
- Diameter : 0.75 m
- Characterized (EB-055)

END OF LIFE



# TRANSPORTABLE - BROADBAND

## Drive-away antennas / DSNG

### Drive away Skyhook II

- Manufacturer : IPCopter GmbH & Co. KG
- Tx Frequency Band: 29.50 – 30.00 GHz
- Rx Frequency Band : 19.70 – 20.20 GHz
- Tx Gain : 44.2 dBi
- G/T : 18.34 dB/K
- HPA max : 3W maximum
- Diameter : 0.75 m
- Type Approved (EB-034)



# TRANSPORTABLE - BROADBAND

## Drive-away antennas / DSNG

### MA-Ma-74G-3 Axis

- Manufacturer : C-COM Satellite Systems Inc
- Tx Frequency Band: 29.00 – 30.00 GHz
- Rx Frequency Band : 17.70 – 20.20 GHz
- Tx Gain : 44.9 dBi
- G/T : 18.4 dB/K
- HPA max : 4W maximum
- Diameter : 0.75 m
- Characterized (EB-DOP-CCO-075-587)



## TRANSPORTABLE - BROADBAND

### Drive-away antennas / DSNG

C-COM iNetVu Ka-75V – Etria auto-deploy system with Viasat Surfbeam 2

- Manufacturer : C-COM Satellite Systems Inc
- Tx Frequency Band: 29.50 – 30.00 GHz
- Rx Frequency Band : 19.70 – 20.20 GHz
- Tx Gain : 44.1 dBi
- G/T : 18.1 dB/K @ 19.95 GHz
- HPA max : 4W maximum
- Diameter : 0.75m H x 0.72m V, equivalent to 0.75m
- Weight : 52 kg
- Type Approved (EB-049)



# TRANSPORTABLE - BR

## Drive-away antennas / DSNG

C-COM iNetVu Ka-75V auto-deploy system with ViaSat Surfbeam 2

- Manufacturer : C-COM Satellite Systems Inc.
- Tx Frequency Band: 29.50 – 30.00 GHz
- Rx Frequency Band : 19.70 - 20.20 GHz
- Tx Gain : 44.3 dBi
- G/T : 16.8 dB/K
- HPA max : BUC 4W maximum
- Diameter : 0.75m H x 0.72m V
- Type Approved (EB-007)

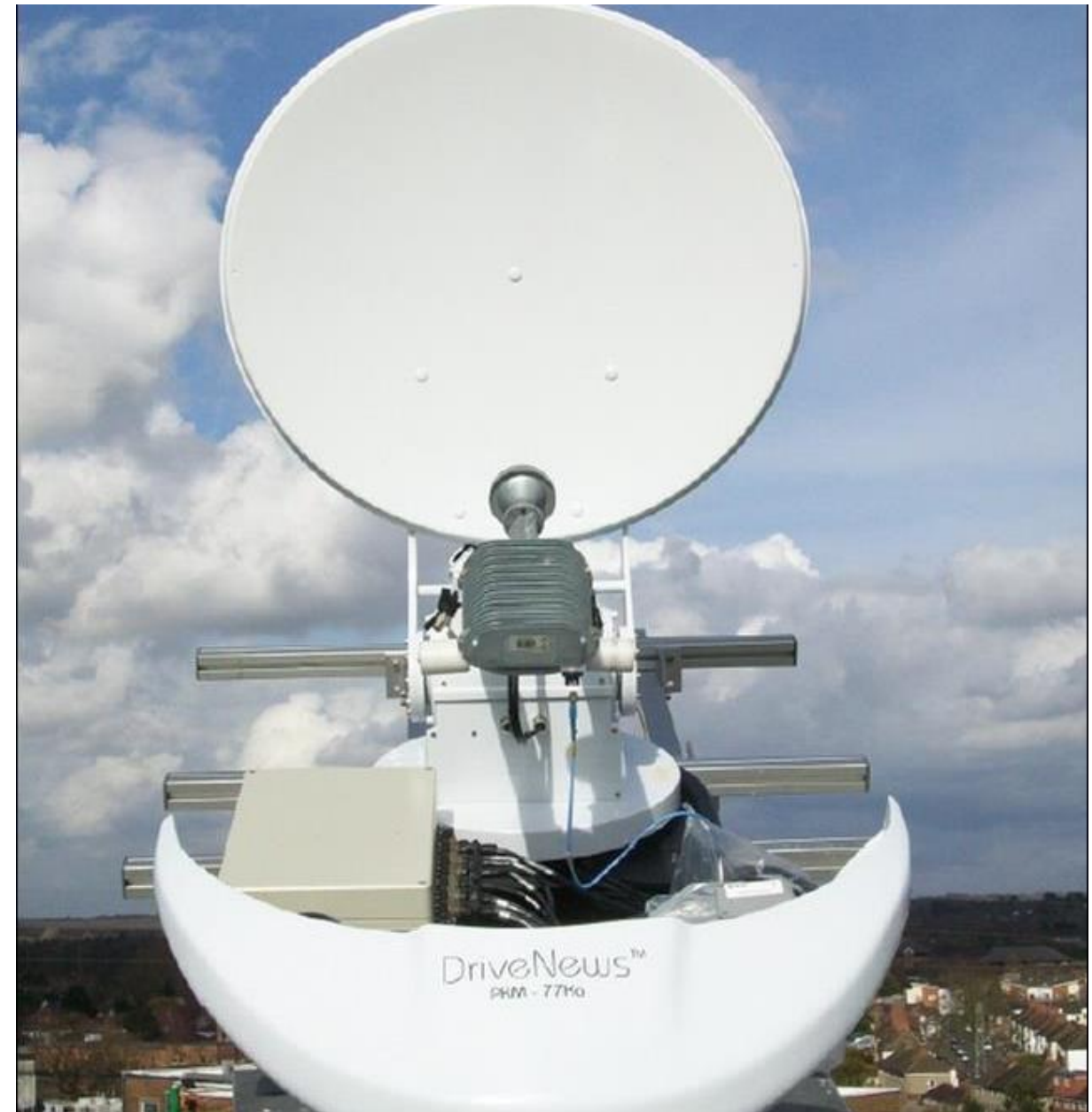


# TRANSPORTABLE - BROADBAND

## Drive-away antennas / DSNG

PALS PKM-77Ka auto-deploy system with Viasat Surfbeam 2

- Manufacturer : PALS Electronics Co Ltd
- Tx Frequency Band: 29.50 – 30.00 GHz
- Rx Frequency Band : 19.70 - 20.20 GHz
- Tx Gain : 44.1 dBi
- G/T : 17.5 dB/K
- HPA max : BUC 4W maximum
- Diameter : 0.75m H x 0.72m V
- Type Approved (EB-012)



# TRANSPORTABLE - BROADBAND

## Drive-away antennas / DSNG

SVS AKS250 with ViaSat Surfbeam 2

- Manufacturer : SVS SATELLITE SYSTEMS
- Tx Frequency Band: 29.50 – 30.00 GHz
- Rx Frequency Band : 19.70 - 20.20 GHz
- Tx Gain : 44.0 dBi
- G/T : 17.2 dB/K
- HPA max : BUC maximum rating 4W
- Diameter : 0.75m H x 0.72m V
- Type Approved (EB-014)





## TRANSPORTABLE - BROADBAND

### Drive-away antennas / DSNG

#### Drive Away IPCopter with ViaSat Surfbeam 2

- Manufacturer : IPCopter GmbH & Co. KG
- Tx Frequency Band: 29.50 – 30.00 GHz
- Rx Frequency Band : 19.70 - 20.20 GHz
- Tx Gain : 43.1 dBi
- G/T : 17.2 dB/K
- HPA max : BUC maximum rating 4W
- Diameter : 0.75m H x 0.72m V
- Type Approved (EB-013)

No available picture

# TRANSPORTABLE - BROADBAND

## Drive-away antennas / DSNG

GC-Zero 70 KA-SAT auto-deploy system with ViaSat Surfbeam 2

- Manufacturer : Dawson (as part of DawCom Ltd)
- Tx Frequency Band: 29.50 – 30.00 GHz
- Rx Frequency Band : 19.70 - 20.20 GHz
- Tx Gain : 43.4 dBi
- G/T : 17.1 dB/K
- HPA max : BUC maximum 3W & maximum output power 2W
- Diameter : 0.75m H x 0.72m V
- Type Approved (EB-009)



## TRANSPORTABLE - BROADBAND

### Drive-away antennas / DSNG

AVL 880KVH with integrated Viasat TRIA

- Manufacturer : AVL Technologies
- Tx Frequency Band: 29.50 – 30.00 GHz
- Rx Frequency Band : 19.70 - 20.20 GHz
- Tx Gain : 45.9 dBi
- G/T : 19.8 dB/K
- HPA max : BUC maximum rating 3W and maximum output power 2W
- Diameter : 0.85 m
- Type Approved (EB-010)



# TRANSPORTABLE - BROADBAND

## Drive-away antennas / DSNG

ND Satcom Ka2GO With integrated ViaSat TRIA

- Manufacturer : ND Satcom GmbH
- Tx Frequency Band: 29.50 – 30.00 GHz
- Rx Frequency Band : 19.70 - 20.20 GHz
- Tx Gain : 45.8 dBi
- G/T : 19.9 dB/K
- HPA max : BUC 4W maximum
- Diameter : 0.89 m
- Type Approved (EB-019)



## FIXED ANTENNAS - GENERIC

---

90 EMIT 0141095

- Manufacturer : MAEC-VISIOSAT
- Tx Frequency Band: 14.00 – 14.50 GHz
- Rx Frequency Band : 10.70 – 12.75 GHz
- Tx Gain : 40.2 dBi
- G/T : 18.4 dB/K
- HPA max : 2W
- Diameter : 0.9 m
- Type Approved (EA-V043)

No available picture

## TRANSPORTABLE - BROADBAND

### Drive-away antennas / DSNG

C-COM iNetVu Ka-98V

auto-deploy system with Skyware Global Type 980 SI antenna

- Manufacturer : C-COM Satellite Systems Inc
- Tx Frequency Band: 29.50 – 30.00 GHz
- Rx Frequency Band : 19.70 – 20.20 GHz
- Tx Gain : 46.5 dBi
- G/T : 19.4 dB/K
- HPA max : BUC 4W maximum
- Diameter : 0.98 m
- Type Approved (EB-022)



# TRANSPORTABLE - BROADBAND

## Drive-away antennas / DSNG

AVL 1080KVH with integrated Viasat TRIA

- Manufacturer : AVL Technologies
- Tx Frequency Band: 29.50 – 30.00 GHz
- Rx Frequency Band : 19.70 - 20.20 GHz
- Tx Gain : 46.9 dBi
- G/T : 21.2 dB/K
- HPA max : BUC maximum rating 3W and maximum output power 2W
- Diameter : 1 m
- Type Approved (EB-011)



# TRANSPORTABLE - BROADBAND

## Drive-away antennas / DSNG

AKD V10A with ViaSat E TRIA or with ViaSat E TRIA professional

- Manufacturer : AKD Communication Technology Co
- Tx Frequency Band: 29.00 – 30.00 GHz
- Rx Frequency Band : 19.70 - 20.20 GHz
- Tx Gain : 47.3 dBi
- G/T : 21.4 dB/K
- HPA max : 4W maximum
- Diameter : 0.98 m
- Characterized (EB-046)





## TRANSPORTABLE - BROADBAND

### Drive-away antennas / DSNG

SISLive DriveForce 100 with integrated ViaSat TRIA

- Manufacturer : SISLive
- Tx Frequency Band: 29.50 – 30.00 GHz
- Rx Frequency Band : 19.70 - 20.20 GHz
- Tx Gain : 47.4 dBi
- G/T : 20.37 dB/K
- HPA max : 4W maximum
- Diameter : 1 m
- Type Approved (EB-023)



# TRANSPORTABLE - BROADBAND

## Drive-away antennas / DSNG

Cobham EXPLORER 7100 MB KASAT  
with integrated ViaSat TRIA

- Manufacturer : COBHAM
- Tx Frequency Band: 29.50 – 30.00 GHz
- Rx Frequency Band : 19.70 - 20.20 GHz
- Tx Gain : 46.9 dBi
- G/T : 21.2 dB/K
- HPA max : BUC maximum 3W & maximum output power 2W
- Diameter : 1 m
- Type Approved (EB-015)



# TRANSPORTABLE - BROADBAND

## Drive-away antennas / DSNG

### EXPLORER 8100 Ka With ViaSat E TRIA

- Manufacturer : Thrane & Thrane A/S trading as COBHAM Satcom
- Tx Frequency Band: 29.50 – 30.00 GHz
- Rx Frequency Band : 19.70 – 20.10 GHz
- Tx Gain : 47.7 dBi
- G/T : 22.2 dB/K
- HPA max : BUC 4W maximum
- Diameter : 1 m
- Type Approved (EB-028)



END OF LIFE

# TRANSPORTABLE - BROADBAND

## Drive-away antennas / DSNG

SMP 125 DA SML 125 DA

- Manufacturer : Satmission AB
- Tx Frequency Band: 29.25 – 30.00 GHz
- Rx Frequency Band : 19.20 - 20.20 GHz
- Tx Gain : 48.9 dBi
- G/T : 23.3 dB/K @ 19.7 GHz
- Diameter : 1.2 m
- Type Approved (EB-042)



# TRANSPORTABLES : *FLY-AWAY*

## *a) Generic antennas*

# TRANSPORTABLE - GENERIC

## Fly-away antennas

### PICO75

- Manufacturer : ReQuTech AB
- Tx Frequency Band: 13.75 – 14.50 GHz
- Rx Frequency Band : 10.70 – 12.75 GHz
- Tx Gain : 37.9 dBi
- G/T : 19.0 dB/K
- HPA max : 50W
- Diameter : 0.75 m
- Characterized



# TRANSPORTABLE - GENERIC

## Fly-away antennas

### LightAway

- Manufacturer : EVERSAT
- Tx Frequency Band: 13.75 – 14.50 GHz
- Rx Frequency Band : 10.70 - 12.75 GHz
- Tx Gain : 38.6 dBi
- HPA max : 200W maximum
- Diameter : 0.8 m
- Characterized



# TRANSPORTABLE - GENERIC

## Fly-away antennas

11026001 EL980X700

- Manufacturer : TELE System Electronic
- Tx Frequency Band: 14.00 – 14.50 GHz
- Rx Frequency Band : 10.70 – 12.75 GHz
- Tx Gain : 40.0 dBi
- G/T : 20.0 dB/K
- HPA max : 2W maximum
- Diameter : 0.83 m
- Type Approved (EA-V052)

No available picture



# TRANSPORTABLE - GENERIC

## Fly-away antennas

### CCT90 SUITCASE

- Manufacturer : Datapath
- Tx Frequency Band: 13.75 – 14.50 GHz
- Rx Frequency Band : 10.70 – 12.75 GHz
- Tx Gain : 38.2 dBi
- G/T : 18.4 dB/K
- HPA max : SSPA 35W maximum
- Diameter : 0.9m x 0.66m
- Type Approved (EA-V042)



**CCT90  
Suitcase®**

# TRANSPORTABLE - GENERIC

## Fly-away antennas

### G90 Tx/Rx

- Manufacturer : Raven Manufacturing
- Tx Frequency Band: 14.00 – 14.50 GHz
- Rx Frequency Band : 10.95 – 12.75 GHz
- Tx Gain : 38.2 dBi
- G/T : 22.7 dB/K
- HPA max : 2W maximum
- Diameter : 0.89 x 0,80 m
- Type Approved (EA-V045)

No available picture

# TRANSPORTABLE - GENERIC

## Fly-away antennas

### 90 EMIT

- Manufacturer : MAEC-VISIOSAT
- Tx Frequency Band: 14.00 – 14.50 GHz
- Rx Frequency Band : 10.70 – 12.75 GHz
- Tx Gain : 40.2 dBi
- HPA max : 2W maximum
- Diameter : 0.9 m
- Type Approved (EA-V044)

No available picture

# TRANSPORTABLE - GENERIC

## Fly-away antennas

1985

- Manufacturer : Raven Manufacturing
- Tx Frequency Band: 13.75 – 14.50 GHz
- Rx Frequency Band : 10.95 – 12.75 GHz
- Tx Gain : 41.1 dBi
- G/T : 17.2 dB/K
- HPA max : 1W
- Diameter : 0.98 m
- Type Approved (EA-V046)

No available picture

# TRANSPORTABLE - GENERIC

## Fly-away antennas

### Cobham EXPLORER 6100

- Manufacturer : THRANE & THRANE A/S
- Tx Frequency Band: 13.75 - 14.50 GHz
- Rx Frequency Band : 10.70 - 12.75 GHz
- Tx Gain : 41.6 dBi
- G/T : 19.5 dB/K
- HPA max : 50W maximum
- Diameter : 1 m
- Characterized



# TRANSPORTABLE - GENERIC

## Fly-away antennas

### 1 m SFK-LT

- Manufacturer : VERTEX RSI
- Tx Frequency Band: 13.75 – 14.50 GHz
- Rx Frequency Band : 10.70 - 12.75 GHz
- Tx Gain : 42.1 dBi
- Diameter : 1 m
- Type Approved (EA-A030)

No available picture

# TRANSPORTABLE - GENERIC

## Fly-away antennas

120 DR 0141126

- Manufacturer : MAEC-VISIOSAT
- Tx Frequency Band: 13.75 – 14.50 GHz
- Rx Frequency Band : 10.70 – 12.75 GHz
- Tx Gain : 42.7 dBi
- G/T : 20.8 dB/K
- HPA max : 4W maximum
- Diameter : 1.2 m
- Type Approved (EA-V053)

No available picture

# TRANSPORTABLE - GENERIC

## Fly-away antennas

CCT 120-4

CCT 120-1

- Manufacturer : Datapath
- Tx Frequency Band: 13.75 – 14.50 GHz
- Rx Frequency Band : 10.95 – 12.75 GHz
- Tx Gain : 41.9 dBi
- G/T : 21.5 dB/K
- HPA max : BUC 50W maximum
- Diameter : 0.83 x 1.2 m
- Type Approved (EA-V057)





# TRANSPORTABLE - GENERIC

## Fly-away antennas

### Prodelin 1135

- Manufacturer : GD Satcom
- Tx Frequency Band: 13.75 – 14.50 GHz
- Rx Frequency Band : 10.95 – 12.75 GHz
- Tx Gain : 43.0 dBi
- G/T : 19.0 dB/K
- HPA max : 1W maximum
- Diameter : 1.2 m
- Type Approved (EA-V047)



Series 1135



# TRANSPORTABLE - GENERIC

## Fly-away antennas

### PICO120

- Manufacturer : ReQuTech AB
- Tx Frequency Band: 13.75 – 14.50 GHz
- Rx Frequency Band : 10.70 – 12.75 GHz
- Tx Gain : 41.7 dBi
- G/T : 22.8 dB/K
- HPA max : 50W
- Diameter : 1.2 m
- Characterized



# TRANSPORTABLE - GENERIC

## Fly-away antennas

DEK120F/2P/100-2

- Manufacturer : ACTIA Telecom
- Tx Frequency Band: 13.75 – 14.50 GHz
- Rx Frequency Band : 10.70 – 12.75 GHz
- Tx Gain : 43.7 dBi
- G/T : 20.3 dB/K
- HPA max : 100W
- Diameter : 1.2 x 1.2 m
- Characterized

No available picture

# TRANSPORTABLE - GENERIC

## Fly-away antennas

### TP120 Fly Away antenna

- Manufacturer : Holkirk Communication Ltd
- Tx Frequency Band: 13.75 – 14.50 GHz
- Rx Frequency Band : 10.70 – 12.75 GHz
- Tx Gain : 43.5 dBi
- G/T : 21 dB/K
- Diameter : 1.2 m
- Characterized



## TRANSPORTABLE - GENERIC

### Fly-away antennas

#### Newswift 120 CF

- Manufacturer : VISLINK International Ltd
- Tx Frequency Band: 13.75 – 14.50 GHz
- Rx Frequency Band : 10.70 - 12.75 GHz
- Tx Gain : 43.4 dBi
- HPA max : 400W maximum
- Diameter : 1.2 m
- Type Approved (EA-A011)

END OF LIFE



## TRANSPORTABLE - GENERIC

### Fly-away antennas

DST150

- Manufacturer : Vislink Communications Ltd
- Tx Frequency Band: 14.00 – 14.50 GHz
- Rx Frequency Band : 10.95 – 12.75 GHz
- Tx Gain : 45 dBi
- HPA max : 400W maximum
- Diameter : 1.5 m
- Type Approved (EA-A001)

END OF LIFE



## TRANSPORTABLE - GENERIC

### Fly-away antennas

#### Newsift 150 CF

- Manufacturer : VISLINK International Ltd
- Tx Frequency Band: 13.75 – 14.50 GHz
- Rx Frequency Band : 10.70 - 12.75 GHz
- Tx Gain : 45.3 dBi
- HPA max : 400W maximum
- Diameter : 1.5 m
- Type Approved (EA-A012)

END OF LIFE



# TRANSPORTABLE - GENERIC

## Fly-away antennas

MFT 1500

- Manufacturer : NDS Satcom AG
- Tx Frequency Band: 12.75 – 14.50 GHz
- Rx Frequency Band : 10.70 - 12.75 GHz
- Tx Gain : 45.8 dBi
- G/T : 22.4 dB/K
- Diameter : 1.5 m
- Type Approved (TA-FLY-NDS-150-712)





# TRANSPORTABLE - GENERIC

## Fly-away antennas

### Newswift 180 CF

- Manufacturer : VISLINK International Ltd
- Tx Frequency Band: 13.75 – 14.50 GHz
- Rx Frequency Band : 10.70 - 12.75 GHz
- Tx Gain : 46.4 dBi
- HPA max : 750W maximum
- Diameter : 1.8 m
- Characterized

END OF LIFE



# TRANSPORTABLE - GENERIC

## Fly-away antennas

### CCT200 Fly-Away

- Manufacturer : DataPath International AB
- Tx Frequency Band: 13.75 – 14.50 GHz
- Rx Frequency Band : 10.70 – 12.75 GHz
- Tx Gain : 46.0 dBi
- G/T : 23.6 dB/K
- HPA max : 400W
- Diameter : 2.0m H x 1.6m V
- Characterized



# TRANSPORTABLE - GENERIC

## Fly-away antennas

### Mantis 2.4m C-band

- Manufacturer : Vislink Communications Ltd
- Tx Frequency Band: 5.85 – 6.425 GHz
- Rx Frequency Band : 3.60 – 4.20 GHz
- Tx Gain : 41.3 dBi
- G/T : 17.0 dB/K
- HPA max : 750W
- Diameter : 2.4 m
- Characterized

END OF LIFE

# TRANSPORTABLE - GENERIC

## Fly-away antennas

### Mantis 2.4m Ku-band

- Manufacturer : Vislink Communications Ltd
- Tx Frequency Band: 13.75 – 14.50 GHz
- Rx Frequency Band : 10.70 – 12.75 GHz
- Tx Gain : 48.5 dBi
- G/T : 25.4 dB/K
- HPA max : 750W
- Diameter : 2.4 m
- Characterized

END OF LIFE



# TRANSPORTABLE - GENERIC

## Fly-away antennas

### 2.4 SMC-LT

- Manufacturer : VERTEX RSI
- Tx Frequency Band: 5.850 – 6.425 GHz
- Rx Frequency Band : 3.625 – 4.20 GHz
- Tx Gain : 42.1 dBi
- Diameter : 2.4 m
- Type Approved (EA-A031)

No available picture

# TRANSPORTABLE - GENERIC

## Fly-away antennas

### 2.4 SFK-1575I (2 ports feed)

- Manufacturer : VERTEX RSI
- Tx Frequency Band: 13.75 – 14.50 GHz
- Rx Frequency Band : 10.70 – 12.75 GHz
- Tx Gain : 48.9 dBi
- Diameter : 2.4 m
- Characterized

No available picture

# TRANSPORTABLE - GENERIC

## Fly-away antennas

### 2.4 SFC-2712C (2 ports feed)

- Manufacturer : VERTEX RSI
- Tx Frequency Band: 5.850 – 6.425 GHz
- Rx Frequency Band : 3.625 – 4.20 GHz
- Tx Gain : 41.9 dBi
- Diameter : 2.4 m
- Characterized

No available picture

# TRANSPORTABLE - GENERIC

---

## Fly-away antennas

### 2.4 SMC-LT (4 ports feed)

- Manufacturer : VERTEX RSI
- Tx Frequency Band: 5.850 – 6.425 GHz
- Rx Frequency Band : 3.625 – 4.20 GHz
- Tx Gain : 41.7 dBi
- Diameter : 2.4 m
- Type Approved (EA-A036)

No available picture



# TRANSPORTABLE - GENERIC

## Fly-away antennas

### 2.4 SMK-LT (4 ports feed)

- Manufacturer : VERTEX RSI
- Tx Frequency Band: 13.75 – 14.50 GHz
- Rx Frequency Band : 10.70 – 12.75 GHz
- Tx Gain : 48.9 dBi
- Diameter : 2.4 m
- Type Approved (EA-A037)

No available picture

# TRANSPORTABLE - GENERIC

## Fly-away antennas

### Paradigm AnaSat Ku 1600

- Manufacturer : Paradigm (UK)
- Tx Frequency Band: 14.00 – 14.50 GHz
- Rx Frequency Band : 10.95 – 12.75 GHz
- Tx Gain : 49.2 dBi
- HPA max : from 2W, 4W, 8W to 16W maximum
- Diameter : 2.4 m
- Type Approved (EA-V032)

No available picture

# TRANSPORTABLE - GENERIC

## Fly-away antennas

2.4m dual optics Ku-band

(62-2445202)

- Manufacturer : Skyware Global
- Tx Frequency Band: 13.75 – 14.50 GHz
- Rx Frequency Band : 10.70 – 12.75 GHz
- Tx Gain : 49.2 dBi
- G/T : 21.5 dB/K
- HPA max : 16W maximum
- Diameter : 2.4 m
- Type Approved (EA-V062)

END OF LIFE

# TRANSPORTABLES : *FLY-AWAY*

## *b) Broadband antennas*

# TRANSPORTABLE - BROADBAND

## Fly-away antennas

FastiPTM 77cm

with ViaSat Surfbeam 2

- Manufacturer : OPENSAT
- Tx Frequency Band: 29.50 – 30.00 GHz
- Rx Frequency Band : 19.70 - 20.20 GHz
- Tx Gain : 44.2 dBi
- HPA max : BUC 4W maximum
- Diameter : 0.75m H X 0.72m V
- Characterized (EB-005)



# TRANSPORTABLE - BROADBAND

## Fly-away antennas

10KaS Diamond

Approved with Cobham/Era reflector

- Manufacturer : Cobham CTS – Cobham Technical Services
- Tx Frequency Band: 29.50 – 30.00 GHz
- Rx Frequency Band : 19.70 - 20.20 GHz
- Tx Gain : 47.5 dBi
- HPA max : BUC maximum 3W & maximum output power 2W
- Diameter : 1 m
- Type Approved (EB-006)



# TRANSPORTABLE - BROADBAND

## Fly-away antennas

### TracStar LVC750P8

- Manufacturer : COBHAM
- Tx Frequency Band: 29.50 – 30.00 GHz
- Rx Frequency Band : 19.70 - 20.20 GHz
- Tx Gain : 43.6 dBi
- HPA max : 4W maximum
- Diameter : 0.75 m
- Type Approved (EB-008)



## TRANSPORTABLE - BROADBAND

### Fly-away antennas

#### C-COM Fly-75V with ViaSat Surfbeam 2

- Manufacturer : C-COM Satellite Systems Inc.
- Tx Frequency Band: 29.50 – 30.00 GHz
- Rx Frequency Band : 19.70 - 20.20 GHz
- Tx Gain : 44.6 dBi
- G/T : 17.5 dB/K
- HPA max : 4W maximum
- Diameter : 0.75m H x 0.72m V
- Type Approved (EB-017)





# TRANSPORTABLE - BROADBAND

## Fly-away antennas

AVL 0614 with integrated ViaSat TRIA, E-TRIA or P-TRIA

- Manufacturer : AVL Technologies
- Tx Frequency Band: 29.50 – 30.00 GHz
- Rx Frequency Band : 19.70 - 20.20 GHz
- Tx Gain : 41.9 dBi
- G/T : 16.26 dB/K
- HPA max : 4W maximum
- Diameter : 0.6 m
- Type Approved (EB-024)



# TRANSPORTABLE - BROADBAND

## Fly-away antennas

SIS ManPak 100T  
with integrated ViaSat TRIA

- Manufacturer : SISLive
- Tx Frequency Band: 29.50 – 30.00 GHz
- Rx Frequency Band : 19.70 - 20.20 GHz
- Tx Gain : 46.9 dBi
- G/T : 20.36 dB/K
- HPA max : BUC 4W maximum
- Diameter : 1 m
- Type Approved (EB-025)



# TRANSPORTABLE - BROADBAND

## Fly-away antennas

GV-A0XX-6200-00

with Feed Model: 07-0705-4007

- Manufacturer : Satcube AB
- Tx Frequency Band: 13.75 – 14.50 GHz
- Rx Frequency Band : 10.95 – 12.75 GHz
- Tx Gain : 32.0 dBi
- G/T : 8.8 dB/K
- HPA max : BUC 8W maximum
- Diameter : 0.38m equivalent
- Characterized (EB-053)



# FIXED ANTENNAS

## *a) Generic antennas*

## FIXED ANTENNAS - GENERIC

### 75 Rx/Tx ANT

- Manufacturer : MAEC-VISIOSAT
- Tx Frequency Band: 13.75 – 14.50 GHz
- Rx Frequency Band : 10.70 – 12.75 GHz
- Tx Gain : 39 dBi
- Diameter : 0.75 m
- Weight : 7 kg
- Type Approved (EA-A019)



## FIXED ANTENNAS - GENERIC

---

75 Rx/Tx ANT 0141054

- Manufacturer : MAEC-VISIOSAT
- Tx Frequency Band: 14.00 – 14.50 GHz
- Rx Frequency Band : 10.70 – 12.75 GHz
- Tx Gain : 39 dBi
- G/T : 17.0 dB/K
- HPA max : 2W
- Diameter : 0.75 m
- Type Approved (EA-V040)

No available picture

## FIXED ANTENNAS - GENERIC

---

OA1600B

- Manufacturer : TSAT A.S.
- Tx Frequency Band: 13.75 – 14.50 GHz
- Rx Frequency Band : 10.70 – 12.75 GHz
- Tx Gain : 41.4 dBi
- G/T : 19.6 dB/K
- HPA max : 2W SSPA
- Diameter : 0.9 m
- Type Approved (EA-V013)

No available picture

## FIXED ANTENNAS - GENERIC

---

90 DR 0141044

- Manufacturer : MAEC-VISIOSAT
- Tx Frequency Band: 13.75 – 14.50 GHz
- Rx Frequency Band : 10.70 – 12.75 GHz
- Tx Gain : 40.1 dBi
- G/T : 18.2 dB/K
- HPA max : 2W
- Diameter : 0.9 m
- Type Approved (EA-V041)

No available picture



## FIXED ANTENNAS - GENERIC

---

OA1600C

- Manufacturer : TSAT A.S.
- Tx Frequency Band: 13.75 – 14.50 GHz
- Rx Frequency Band : 10.70 – 12.75 GHz
- Tx Gain : 43.4 dBi
- G/T : 22.1 dB/K
- HPA max : 2W SSPA
- Diameter : 1.2 m
- Type Approved (EA-V014)

No available picture

## FIXED ANTENNAS - GENERIC

---

### 1.2 m RXTx Type 125 Class I

- Manufacturer : Skyware Global
- Tx Frequency Band: 13.75 – 14.50 GHz
- Rx Frequency Band : 10.70 – 12.75 GHz
- Tx Gain : 43.5 dBi
- G/T : 21.3 dB/K
- HPA max : BUC 16W maximum
- Diameter : 1.2 m
- Type Approved (EA-V055)

No available picture

# FIXED ANTENNAS - GENERIC

## Prodelin 1244

- Manufacturer : GD Satcom
- Tx Frequency Band: 14.00 – 14.50 GHz
- Rx Frequency Band : 10.95 – 12.75 GHz
- Tx Gain : 49.2 dBi
- HPA max : from 2W, 4W, 8W to 16W maximum
- Diameter : 2.4 m
- Type Approved



# FIXED ANTENNAS - GENERIC

---

## ESA24K-1

- Manufacturer : Kratos Antenna Solutions Corporation (previously ASC Signal)
- Tx Frequency Band: 12.75 – 14.50 GHz
- Rx Frequency Band : 10.95 – 12.75 GHz
- Tx Gain : 48.5 dBi
- Diameter : 2.4 m
- Type Approved (EA-A003)

END OF LIFE

# FIXED ANTENNAS - GENERIC

---

## 2.4 DPK

- Manufacturer : Vertex RSI
- Tx Frequency Band: 13.75 – 14.50 GHz
- Rx Frequency Band : 10.95 – 12.75 GHz
- Tx Gain : 48.7 dBi
- Diameter : 2.4 m
- Type Approved (EA-A007)

No available picture

## FIXED ANTENNAS ? - GENERIC

---

DESNET 2000 - 24

- Manufacturer : Selex Communications
- Tx Frequency Band: 14.00 – 14.50 GHz
- Rx Frequency Band : 10.95 – 12.75 GHz
- Tx Gain : 49.2 dBi
- G/T : 27.0 dB/K
- HPA max : 16W
- Diameter : 2.4 m
- Type Approved (EA-V036)

No available picture

## FIXED ANTENNAS - GENERIC

### ES37(MPJ)K

- Manufacturer : Kratos Antenna Solutions Corporation (previously ASC Signal)
- Tx Frequency Band: 14.00 – 14.50 GHz
- Rx Frequency Band : 10.95 – 12.75 GHz
- Tx Gain : 53 dBi
- Diameter : 3.7 m
- Type Approved (EA-A002)



# FIXED ANTENNAS - GENERIC

3.80 Meter VXK / 3.80 Meter PMK  
(2 ports feed system)

- Manufacturer : GENERAL DYNAMICS
- Tx Frequency Band: 13.75 – 14.50 GHz
- Rx Frequency Band : 10.70 – 12.75 GHz
- Tx Gain : 53.2 dBi
- Diameter : 3.8 m
- Weight : 311 kg
- Type Approved (EA-A015)





# FIXED ANTENNAS - GENERIC

3.80 Meter VXK / 3.80 Meter PMK  
(4 ports feed system)

- Manufacturer : GENERAL DYNAMICS
- Tx Frequency Band: 13.75 – 14.50 GHz
- Rx Frequency Band : 10.70 – 12.75 GHz
- Tx Gain : 53.2 dBi
- Diameter : 3.8 m
- Weight : 311 kg
- Type Approved (EA-A039)



## FIXED ANTENNAS - GENERIC

3.80 Meter VXK / 3.80 Meter PMK  
(4 ports DBS feed system)

- Manufacturer : GENERAL DYNAMICS
- Tx Frequency Band: 17.30 – 18.40 GHz
- Rx Frequency Band : 10.70 – 12.75 GHz
- Tx Gain : 54.4 dBi
- G/T : 30.6 dB/K
- Diameter : 3.8 m
- Weight : 311 kg
- Characterized



# FIXED ANTENNAS - GENERIC

## 4.8m KPK

- Manufacturer : Vertex RSI
- Tx Frequency Band: 13.75 – 14.50 GHz
- Rx Frequency Band : 10.70 – 12.75 GHz
- Tx Gain : 55 dBi
- Diameter : 4.8 m
- Type Approved (EA-A023)



# FIXED ANTENNAS - GENERIC

825-2020-001

- Manufacturer : Page Europa
- Tx Frequency Band: 14.00 – 14.50 GHz
- Rx Frequency Band : 10.95 – 12.75 GHz
- Tx Gain : 55.4 dBi
- Diameter : 4.8 m
- Type Approved (EA-A018)



# FIXED ANTENNAS - GENERIC

## 4.8m KPC

- Manufacturer : Vertex RSI
- Tx Frequency Band: 5.850 – 6.425 GHz
- Rx Frequency Band : 3.625 – 4.2 GHz
- Tx Gain : 47.8 dBi
- Diameter : 4.8 m
- Type Approved (EA-A024)



# FIXED ANTENNAS - GENERIC

## Type 965 Class I

- Manufacturer : Skyware Global
- Tx Frequency Band: 13.75 – 14.50 GHz
- Rx Frequency Band : 10.70 – 12.75 GHz
- Tx Gain : 41.2 dBi
- HPA max : 16W maximum
- Diameter : 0.96 m
- Type Approved (EA-V061)



## FIXED ANTENNAS - GENERIC

### Type 988 Class I With Cielo Transceiver

- Manufacturer : Skyware Global
- Tx Frequency Band: 28.30 – 30.00 GHz
- Rx Frequency Band : 18.30 – 20.20 GHz
- Tx Gain : 47.6 dBi
- G/T : 22.1 dB/K
- HPA max : 3W maximum
- Diameter : 0.98 m
- Type Approved (EA-V064)



# FIXED ANTENNAS - GENERIC

Type 185 Class III With Mode Matched Compensated Feed

- Manufacturer : Skyware Global
- Tx Frequency Band: 13.75 – 14.50 GHz
- Rx Frequency Band : 10.70 – 12.75 GHz
- Tx Gain : 46.7 dBi
- G/T : 25.2 dB/K
- HPA max : 16W maximum
- Diameter : 1.8 m
- Type Approved (EA-V065)





## FIXED ANTENNAS - GENERIC

2.4m single optics Ku-Band Type 245 Class III Ku Band (compensated 2 port feed)

- Manufacturer : Skyware Global
- Tx Frequency Band: 13.75 – 14.50 GHz
- Rx Frequency Band : 10.70 – 12.75 GHz
- Tx Gain : 49.2 dBi
- G/T : 27.7 dB/K
- HPA max : 16W maximum
- Diameter : 2.4 m
- Type Approved (EA-V066)



# FIXED ANTENNAS

## *b) Broadband antennas*

# FIXED ANTENNAS – BROADBAND

## ViaSat Surfbeam 2

- Manufacturer : ViaSat, Inc
- Tx Frequency Band: 29.50 – 30.00 GHz
- Rx Frequency Band : 19.70 - 20.20 GHz
- Tx Gain : 44.2 dBi
- G/T : 17.2 dB/K
- HPA max : maximum rating 3W and maximum output power 2W
- Diameter : 0.75m H X 0.72m V
- Type Approved (EB-002)



# FIXED ANTENNAS – BROADBAND

ViaSat Surfbeam 2

72 cm consumer User Terminal

- Manufacturer : ViaSat, Inc
- Tx Frequency Band: 29.50 – 30.00 GHz
- Rx Frequency Band : 19.70 - 20.20 GHz
- Tx Gain : 45.2 dBi
- G/T : 17.8 dB/K
- HPA max : maximum rating 3W and maximum output power 2W
- Diameter : 0.75m H X 0.72m V
- Type Approved (EB-016)



## FIXED ANTENNAS - BROADBAND

### Skyware Global Type 980 SI

- Manufacturer : Skyware Global
- Tx Frequency Band: 29.50 – 30.00 GHz
- Rx Frequency Band : 19.70 - 20.20 GHz
- Tx Gain : 46.3 dBi
- G/T : 19.4 dB/K
- HPA max : 4W maximum
- Diameter : 0.99m H x 0.93m V
- Type Approved (EB-020)

END OF LIFE



## FIXED ANTENNAS – BROADBAND

---

0 141 162 (2 ports feed)

- Manufacturer : MAEC-VISIOSAT
- Tx Frequency Band: 13.75 – 14.50 GHz
- Rx Frequency Band : 10.70 - 12.75 GHz
- Tx Gain : 40.1 dBi
- HPA max : maximum rating 3W and maximum output power 2W
- Diameter : 0.9m X 0.99m
- Characterized (EB-001)

No available picture

# FIXED ANTENNAS - BROADBAND

## NEWTEC IP Easy ANT 2025

- Manufacturer : NEWTEC Cy N.V.
- Tx Frequency Band: 14.00 – 14.50 GHz
- Rx Frequency Band : 10.70 – 12.75 GHz
- Tx Gain : 42.3 dBi
- G/T : 18.9 dB/K
- HPA max : BUC 8W maximum
- Diameter : 1.077H x 1.00 V m
- Type Approved (EB-018)



## FIXED ANTENNAS – BROADBAND

ViaSat Tooway Professional 1.2 m  
With Integrated ViaSat eTRIA

- Manufacturer : ViaSat Inc
- Tx Frequency Band: 29.50 – 30.00 GHz
- Rx Frequency Band : 19.70 – 20.20 GHz
- Tx Gain : 49.9 dBi
- G/T : 23.6 dB/K
- HPA max : 4W maximum
- Diameter : 1.2 m
- Type Approved (EB-021)

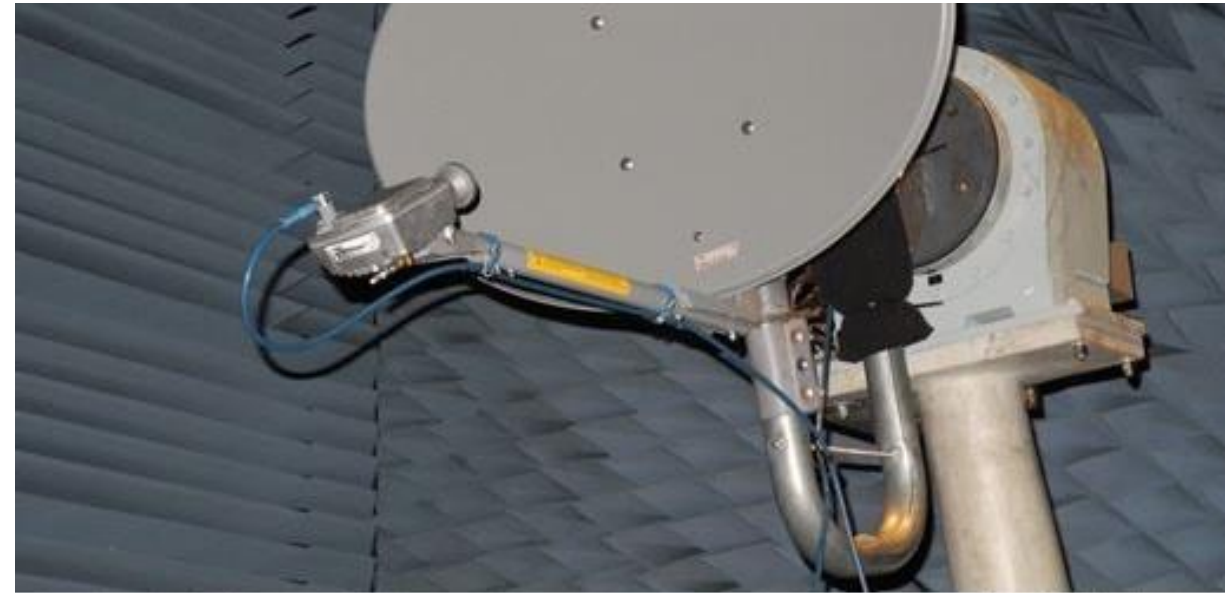




# FIXED ANTENNAS – BROADBAND

## Model 74 cm Ka band Jupiter1

- Manufacturer : Skyware Global
- Tx Frequency Band: 29.00 – 30.00 GHz
- Rx Frequency Band : 19.20 – 20.20 GHz
- Tx Gain : 45.4 dBi
- G/T : 19.7 dB/K
- HPA max : 1W
- Diameter : 0.91m H x 0.66m V equivalent  
0.74m
- Type Approved (EB-030)



# FIXED ANTENNAS – BROADBAND

## Gilat AT2364

- Manufacturer : Gilat satellite networks Ltd
- Tx Frequency Band: 29.00 – 30.00 GHz
- Rx Frequency Band : 19.20 – 20.20 GHz
- Tx Gain : 45.5 dBi
- G/T : 19.8 dB/K
- HPA max : 4W maximum
- Diameter : 0.88m H x 0.66 m V, equivalent to 0.76m
- Type Approved (EB-031)



Top pole version of AZ/EL mount

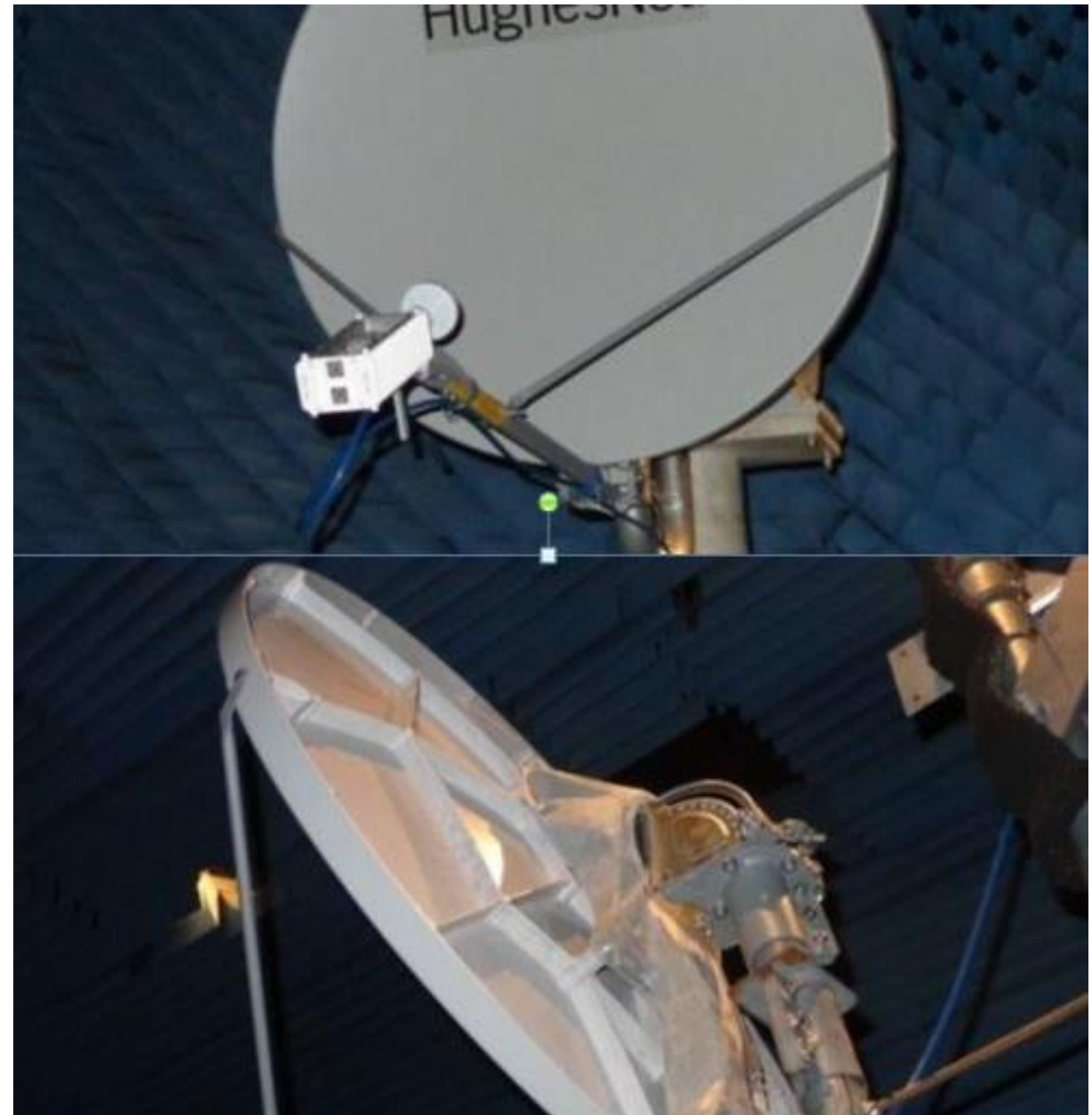


# FIXED ANTENNAS – BROADBAND

Gilat ref : AT 2011

Sky. Gl. ref.: 62-9886111

- Manufacturer : Skyware Global
- Tx Frequency Band: 29.00 – 30.00 GHz
- Rx Frequency Band : 19.20 – 20.20 GHz
- Tx Gain : 47.9 dBi
- G/T : 22.02 dB/K
- HPA max : 4W maximum
- Diameter : 0.98 m
- Type Approved (EB-032)



## FIXED ANTENNAS – BROADBAND

Gilat ref.: AT 2015 Top pole, AT 2364 Mid Pole  
Sky. Gl. ref.: 62-1276111

- Manufacturer : Skyware Global
- Tx Frequency Band: 29.00 – 30.00 GHz
- Rx Frequency Band : 19.70 – 20.20 GHz
- Tx Gain : 49.5 dBi
- G/T : 27 dB/K
- HPA max : 2.5W maximum
- Diameter : 1.2 m
- Type Approved (EB-033)



## FIXED ANTENNAS – BROADBAND

Model 74 cm Ka band with ViaSat E TRIA

- Manufacturer : Skyware Global
- Tx Frequency Band: 29.00 – 30.00 GHz
- Rx Frequency Band : 19.20 – 20.20 GHz
- Tx Gain : 44.4 dBi
- G/T : 18.6 dB/K
- HPA max : 4W maximum
- Diameter : 0.91m H x 0.66m V equivalent 0.74m
- Type Approved (EB-035)



# FIXED ANTENNAS – BROADBAND

## Model 74 cm Ka band with Hughes Jupiter 2

- Manufacturer : Skyware Global
- Tx Frequency Band: 29.00 – 30.00 GHz
- Rx Frequency Band : 19.20 – 20.20 GHz
- Tx Gain : 44.0 dBi
- G/T : 18.8 dB/K
- HPA max : 2.5W maximum
- Diameter : 0.91m H X 0.66m V equivalent 0.74 m
- Type Approved (EB-041)



# FIXED ANTENNAS – BROADBAND

Model 0.98 m Ka band with ViaSat E TRIA

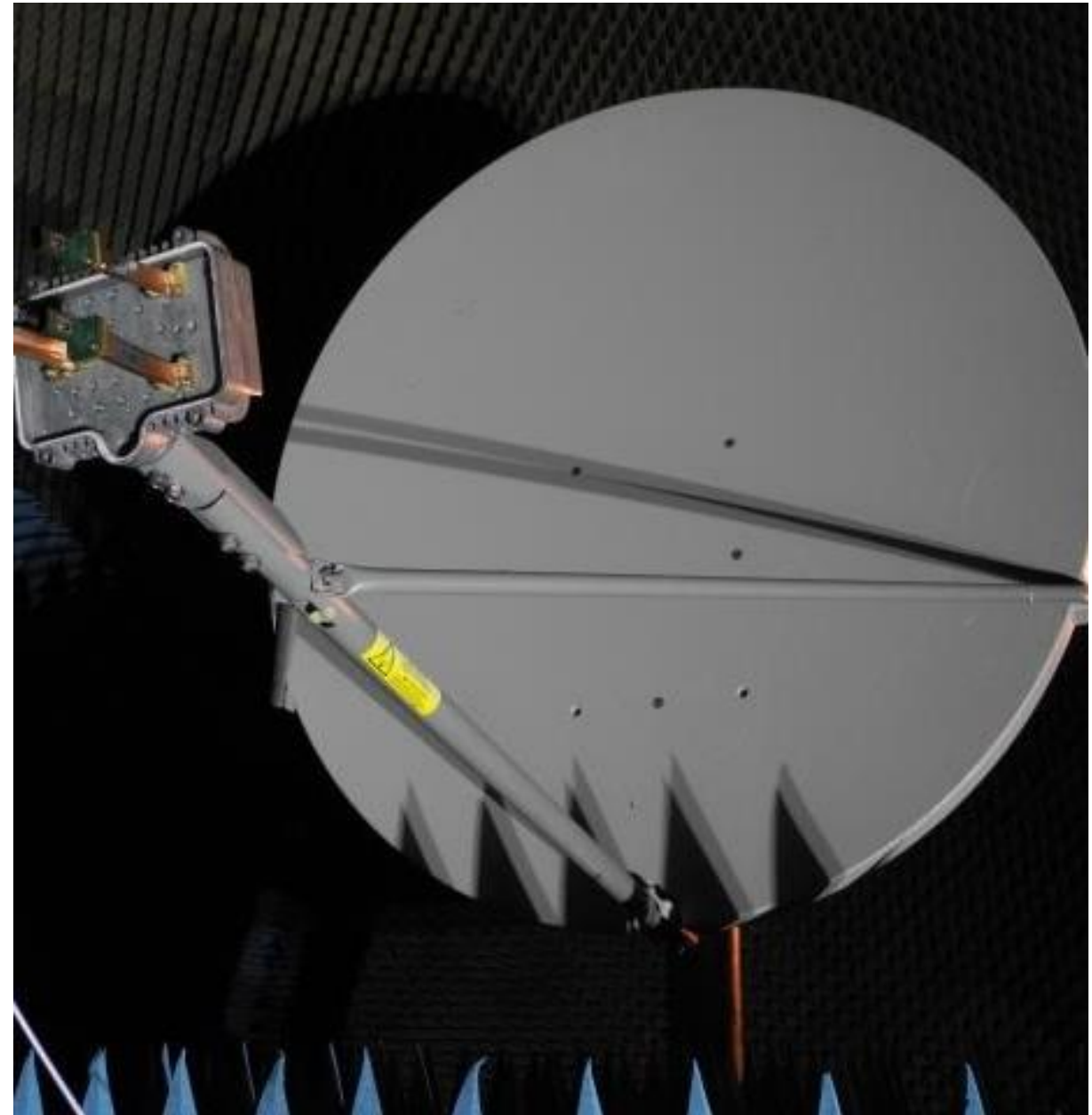
- Manufacturer : Skyware Global
- Tx Frequency Band: 29.00 – 30.00 GHz
- Rx Frequency Band : 19.20 – 20.20 GHz
- Tx Gain : 46.1 dBi
- G/T : 20.4 dB/K
- HPA max : 4W maximum
- Diameter : 0.98 m
- Type Approved (EB-037)



# FIXED ANTENNAS – BROADBAND

Model 127cm Ka band with ViaSat E TRIA

- Manufacturer : Skyware Global
- Tx Frequency Band: 29.00 – 30.00 GHz
- Rx Frequency Band : 19.20 – 20.20 GHz
- Tx Gain : 48.9 dBi
- G/T : 22.8 dB/K at 19.70 GHz
- HPA max : 4W maximum
- Diameter : 1.2m
- Weight :
- Type Approved (EB-038)

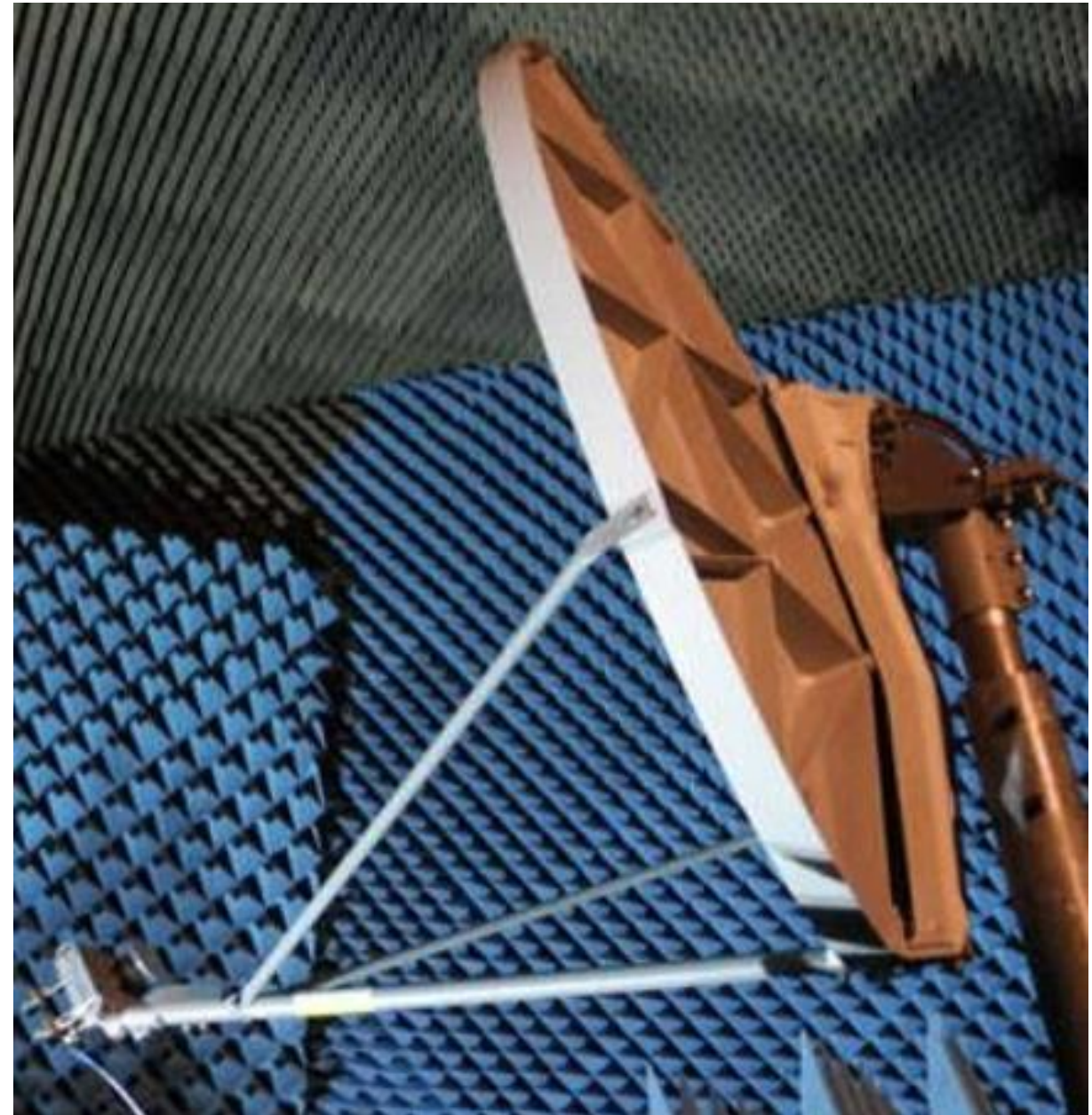




# FIXED ANTENNAS – BROADBAND

Model 127 cm Ka band with Hughes Jupiter 1

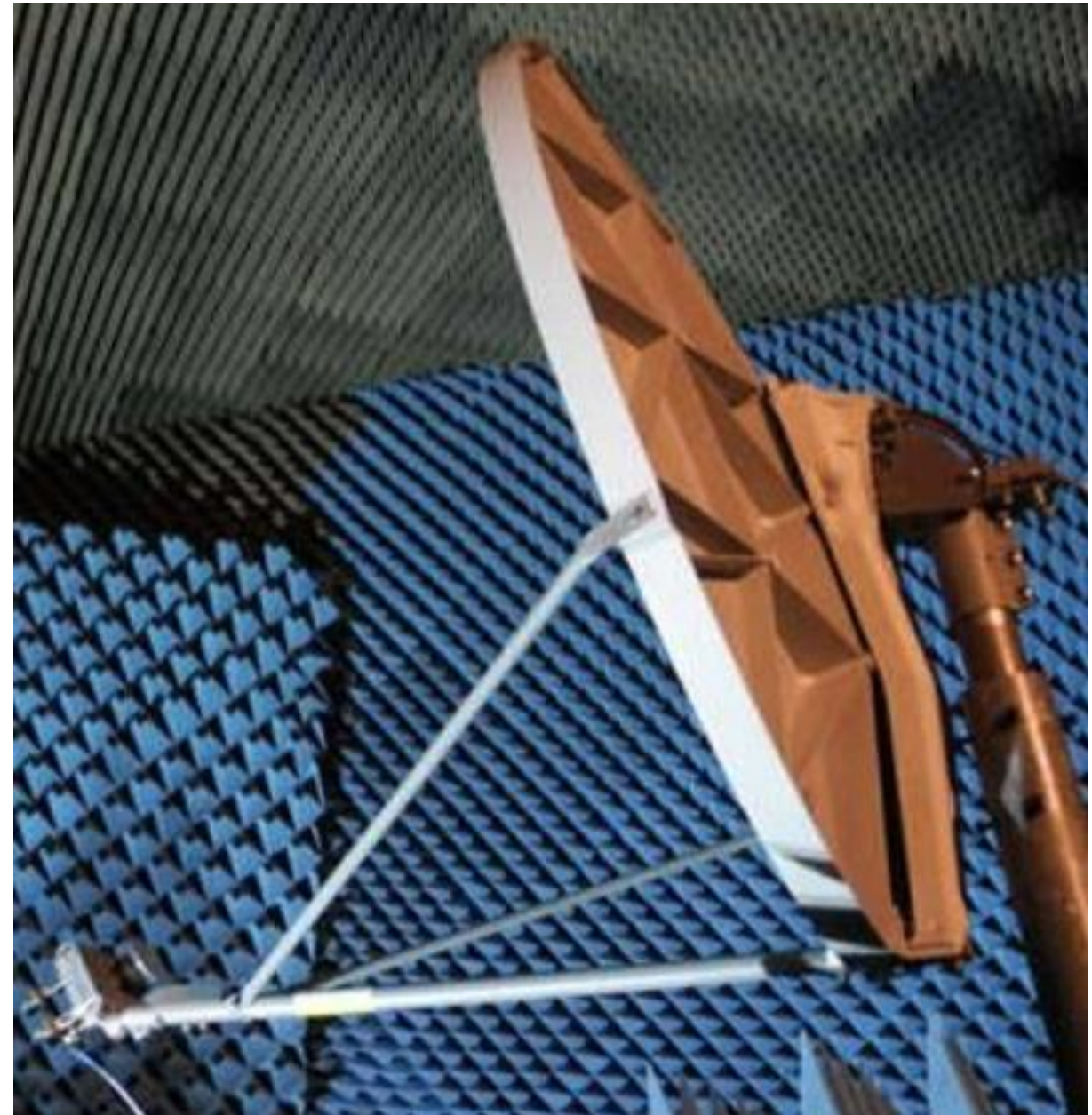
- Manufacturer : Skyware Global
- Tx Frequency Band: 29.00 – 30.00 GHz
- Rx Frequency Band : 19.20 – 20.20 GHz
- Tx Gain : 48.9 dBi
- G/T : 23.12 dB/K at 19.70 GHz
- HPA max : 1W maximum
- Diameter : 1.2m
- Weight :
- Type Approved (EB-039)



# FIXED ANTENNAS – BROADBAND

## Model 127 cm Ka band with Hughes Jupiter 2

- Manufacturer : Skyware Global
- Tx Frequency Band: 29.00 – 30.00 GHz
- Rx Frequency Band : 19.20 – 20.20 GHz
- Tx Gain : 48.3 dBi
- G/T : 22.5 dB/K at 19.70 GHz
- HPA max : 2.5W maximum
- Diameter : 1.2m
- Weight :
- Type Approved (EB-040)



## FIXED ANTENNAS – BROADBAND

### SKY74XRF

- Manufacturer : Skyware Technologies
- Tx Frequency Band: 29.00 – 30.00 GHz
- Rx Frequency Band : 17.80 – 20.20 GHz
- Tx Gain : 45.11 dBi
- G/T : 19.6 dB/K @ 19.00 GHz
- HPA max : 4W maximum
- Diameter : 0.74m
- Type Approved (EB-043)



## FIXED ANTENNAS – BROADBAND

---

ViaSat order n° 12011831 / 12011832

PBI SN 6000081 for ViaSat mechanical TRIA

- Manufacturer : ProBrand International Inc
- Tx Frequency Band: 29.00 – 30.00 GHz
- Rx Frequency Band : 19.70 – 20.20 GHz
- Tx Gain : 44.1 dBi
- G/T : 18.4 dB/K @ 19.95 GHz
- HPA max : 3W maximum
- Diameter : 0.74m
- Type Approved (EB-044)

No available picture

## FIXED ANTENNAS – BROADBAND

ViaSat order n° 12011831 / 12011832

PBI SN 6000071 for ViaSat mechanical TRIA

- Manufacturer : ProBrand International Inc
- Tx Frequency Band: 29.00 – 30.00 GHz
- Rx Frequency Band : 19.70 – 20.20 GHz
- Tx Gain : 44.6 dBi
- G/T : 19.1 dB/K @ 19.95 GHz
- HPA max : 3W maximum
- Diameter : 0.74m
- Type Approved (EB-045)



# FIXED ANTENNAS – BROADBAND

## IP Easy

Azure Shine Technology GV-75XX-5900-00  
with Azur Shine feed-OMT7

- Manufacturer : Azure Shine Technology
- Tx Frequency Band: 13.75 – 14.50 GHz
- Rx Frequency Band : 10.70 – 12.75 GHz
- Tx Gain : 39.8 dBi
- G/T : 17.5 dB/K @ 11.70 GHz
- HPA max : BUC 4W maximum
- Diameter : 0.75m x 0.78m (equivalent to 0.75m)
- Type Approved (EB-047)



# FIXED ANTENNAS – BROADBAND

## Konnect

GV-75XX-5900-00

with feed Model GA-0103-12G0

- Manufacturer : Azure Shine Technology
- Tx Frequency Band: 29.00 – 30.00 GHz
- Rx Frequency Band : 17.80 – 20.20 GHz
- Tx Gain : 45.9 dBi
- G/T : 19.4 dB/K
- HPA max : BUC 3W maximum
- Diameter : 0.75m x 0.78m (equivalent to 0.75m)
- Type Approved (EB-048)



# FIXED ANTENNAS – BROADBAND

## IP Easy

GV-A0XX-6200-00

with OMT Feed Model: 07-0705-4007

- Manufacturer : Azure Shine Technology
- Tx Frequency Band: 12.75 – 14.50 GHz
- Rx Frequency Band : 10.70 – 12.50 GHz
- Tx Gain : 41.3 dBi
- G/T : 18.2 dB/K
- HPA max : BUC 8W maximum
- Diameter : 1 m
- Type Approved (EB-050)





## FIXED ANTENNAS – BROADBAND

### Konnect

Global Skyware 90 cm antenna equipped with HNS Jupiter 2 transceiver

- Manufacturer : Global Skyware
- Tx Frequency Band: 29.50 - 30.00 GHz
- Rx Frequency Band : 17.70 - 20.20 GHz
- Tx Gain : 45.3 dBi
- G/T : 19.7 dB/K
- HPA max :
- Diameter : 0.9 m
- Type Approved (EB-057)



# MARITIME ANTENNAS

## *a) Generic antennas*

# MARITIME ANTENNAS - GENERIC

## TracPhone V3

- Manufacturer : KVH Industries, Inc.
- Tx Frequency Band: 13.75 – 14.50 GHz
- Rx Frequency Band : 11.70 – 12.75 GHz
- Tx Gain : 33.2 dBi
- HPA max : BUC 3W maximum
- Diameter : 0.37 m
- Weight : 11.3 kg
- Characterized



# MARITIME ANTENNAS - GENERIC

## V60

- Manufacturer : Intellian Technologies, Inc.
- Tx Frequency Band: 13.75 – 14.50 GHz
- Rx Frequency Band : 10.95 – 12.75 GHz
- Tx Gain : 38.1 dBi
- HPA max : BUC 8W maximum
- Diameter : 0.60 m
- Weight : 59.5 kg (radome included)
- Characterized



## MARITIME ANTENNAS - GENERIC

### KVH-60 cm TV6

- Manufacturer : KVH Industries, Inc.
- Tx Frequency Band: 14.00 – 14.50 GHz
- Rx Frequency Band : 11.70 – 12.75 GHz
- Tx Gain : 36.6 dBi
- Diameter : 0.60 m
- Weight : 24.2 kg
- Characterized



# MARITIME ANTENNAS - GENERIC

## Supertrack Z6Mk2

- Manufacturer : KNS Inc.
- Tx Frequency Band: 13.75 – 14.50 GHz
- Rx Frequency Band : 10.95 – 12.75 GHz
- Tx Gain : 36.4 dBi
- HPA max : BUC 16W maximum
- Diameter : 0.60 m
- Weight : 43 kg (radome included)
- Characterized



# MARITIME ANTENNAS - GENERIC

## Seatel 2406

- Manufacturer : COBHAM Satcom, Sea Tel
- Tx Frequency Band: 13.75 – 14.50 GHz
- Rx Frequency Band : 10.95 – 12.75 GHz
- Tx Gain : 37.2 dBi
- Diameter : 0.60 m
- Weight : 113 kg (radome included)
- Characterized



## MARITIME ANTENNAS - GENERIC

### COBHAM USAT24

- Manufacturer : COBHAM Satcom, Sea Tel
- Tx Frequency Band: 13.75 – 14.50 GHz
- Rx Frequency Band : 10.95 – 12.75 GHz
- Tx Gain : 37 dBi
- Diameter : 0.60 m
- Weight : 45 kg
- Characterized





# MARITIME ANTENNAS - GENERIC

---

## MVA60

- Manufacturer : MITSUBISHI ELECTRIC CORPORATION
- Tx Frequency Band: 13.75 – 14.50 GHz
- Rx Frequency Band : 10.70 – 12.75 GHz
- Tx Gain : 37.3 dBi
- G/T : 15 dB/K
- HPA max : BUC 8W maximum
- Diameter : 0.62 m
- Type Approved (EA-V060)

No available picture

# MARITIME ANTENNAS - GENERIC

---

## COBHAM Sailor 600 Ku

- Manufacturer : COBHAM Satcom, Sea Tel
- Tx Frequency Band: 13.75 – 14.50 GHz
- Rx Frequency Band : 10.70 - 12.75 GHz
- Tx Gain : 37.6 dBi
- G/T : 15.9 dB/K
- HPA max : BUC 6W maximum
- Diameter : 0.65 m
- Weight : 125 kg (radome included)
- Characterized

No available picture

# MARITIME ANTENNAS - GENERIC

## Navisystem MST 75

- Manufacturer : NAVISYSTEM
- Tx Frequency Band: 13.75 – 14.50 GHz
- Rx Frequency Band : 10.95 – 12.75 GHz
- Tx Gain : 36 dBi
- Diameter : 0.70 m
- Weight : 38 kg
- Characterized



# MARITIME ANTENNAS - GENERIC

## Seatel 3011W

- Manufacturer : COBHAM Satcom, Sea Tel
- Tx Frequency Band: 13.75 – 14.50 GHz
- Rx Frequency Band : 10.70 – 12.75 GHz
- Tx Gain : 38.8 dBi
- G/T : 16.7 dB/K
- HPA max : BUC 4W, 8W, 16W, 20W & 40W maximum
- Diameter : 0.75 m
- Weight : 82 kg (radome included)
- Characterized



# MARITIME ANTENNAS - GENERIC

---

## MAC ISA 75

- Manufacturer : MICRO ADVANCED COMMUNICATIONS S.R.L.
- Tx Frequency Band: 13.75 – 14.50 GHz
- Rx Frequency Band : 10.95 – 12.75 GHz
- Tx Gain : 36.5 dBi
- Diameter : 0.75 m
- Characterized

No available picture

# MARITIME ANTENNAS - GENERIC

---

## CommSat80

- Manufacturer : SITEP Italia Spa
- Tx Frequency Band: 13.75 – 14.50 GHz
- Rx Frequency Band : 10.95 – 12.75 GHz
- Tx Gain : 38.1 dBi
- Diameter : 0.80 m
- Characterized

No available picture

# MARITIME ANTENNAS - GENERIC

---

## Navisystem 85

- Manufacturer : NAVISYSTEM
- Tx Frequency Band: 13.75 – 14.50 GHz
- Rx Frequency Band : 10.95 – 12.75 GHz
- Tx Gain : 37.8 dBi
- Diameter : 0.81 m
- Characterized

No available picture

# MARITIME ANTENNAS - GENERIC

## V80G

- Manufacturer : Intellian Technologies, Inc.
- Tx Frequency Band: 13.75 – 14.50 GHz
- Rx Frequency Band : 10.95 – 12.75 GHz
- Tx Gain : 39.5 dBi
- G/T : 16 dB/K
- HPA max : BUC 8W maximum
- Diameter : 0.83 m
- Weight : 90.4 kg (radome included)
- Characterized





# MARITIME ANTENNAS - GENERIC

## COBHAM Sailor 800 VSAT

- Manufacturer : COBHAM Satcom, Sea Tel
- Tx Frequency Band: 13.75 – 14.50 GHz
- Rx Frequency Band : 10.70 - 12.75 GHz
- Tx Gain : 40.0 dBi
- G/T : 18.2 dB/K
- HPA max : BUC 6W maximum
- Diameter : 0.83 m
- Weight : 125 kg (radome included)
- Characterized



# MARITIME ANTENNAS - GENERIC

B85

- Manufacturer : JOTRON AS
- Tx Frequency Band: 13.75 – 14.50 GHz
- Rx Frequency Band : 10.95 – 12.75 GHz
- Tx Gain : 40.33 dBi
- G/T : 16.2 dB/K
- HPA max : BUC 8W maximum
- Diameter : 0.85 m
- Weight : 89 kg (radome included)
- Characterized



# MARITIME ANTENNAS - GENERIC

## Supertrack Z8

- Manufacturer : KNS Inc.
- Tx Frequency Band: 13.75 – 14.50 GHz
- Rx Frequency Band : 10.95 – 12.75 GHz
- Tx Gain : 38.3 dBi
- Diameter : 0.85 m
- Weight : 87 kg (radome included)
- Characterized



# MARITIME ANTENNAS - GENERIC

## Seatel 3612

- Manufacturer : COBHAM Satcom, Sea Tel
- Tx Frequency Band: 13.75 – 14.50 GHz
- Rx Frequency Band : 10.70 – 12.75 GHz
- Tx Gain : 40.6 dBi
- G/T : 18.1 dB/K
- HPA max : BUC 4W, 8W, 16W & 40W maximum
- Diameter : 0.90 m
- Weight : 132 kg (radome included)
- Characterized



# MARITIME ANTENNAS - GENERIC

## 0.9m DSi9-Ku Pro

- Manufacturer : EPAK GmbH
- Tx Frequency Band: 13.75 – 14.50 GHz
- Rx Frequency Band : 10.70 – 12.75 GHz
- Tx Gain : 39 dBi
- G/T : 17.0 dB/K
- Diameter : 0.90 m
- Weight : 75 kg (radome included)
- Characterized



# MARITIME ANTENNAS - GENERIC

## Navisystem MST 95

- Manufacturer : NAVISYSTEM
- Tx Frequency Band: 13.75 – 14.50 GHz
- Rx Frequency Band : 10.95 – 12.75 GHz
- Tx Gain : 39.3 dBi
- Diameter : 0.95m
- Weight : 48 kg
- Characterized



# MARITIME ANTENNAS - GENERIC

## Ku Mate

- Manufacturer : MITSUBISHI ELECTRIC CORPORATION
- Tx Frequency Band: 13.75 – 14.50 GHz
- Rx Frequency Band : 10.70 – 12.75 GHz
- Tx Gain : 40.9 dBi
- G/T : 18.4 dB/K
- HPA max : BUC 8W maximum
- Diameter : 1 m
- Type Approved (EA-V056)



## MARITIME ANTENNAS - GENERIC

### Seatel 4006

- Manufacturer : COBHAM Satcom, Sea Tel
- Tx Frequency Band: 13.75 – 14.50 GHz
- Rx Frequency Band : 10.95 – 12.75 GHz
- Tx Gain : 40.6 dBi
- Diameter : 1 m
- Weight : 136 kg (radome included)
- Characterized

END OF LIFE





# MARITIME ANTENNAS - GENERIC

## Seatel 4009

- Manufacturer : COBHAM Satcom, Sea Tel
- Tx Frequency Band: 13.75 – 14.50 GHz
- Rx Frequency Band : 10.95 – 12.75 GHz
- Tx Gain : 40.6 dBi
- Diameter : 1 m
- Weight : 147 kg (radome included)
- Characterized



# MARITIME ANTENNAS - GENERIC

V100

- Manufacturer : Intellian Technologies, Inc.
- Tx Frequency Band: 13.75 – 14.50 GHz
- Rx Frequency Band : 10.70 – 12.75 GHz
- Tx Gain : 41.6 dBi
- G/T : 19.6 dB/K
- HPA max : BUC 8W maximum
- Diameter : 1.03 m
- Weight : 128 kg (radome included)
- Characterized



## MARITIME ANTENNAS - GENERIC

### COBHAM Sailor 900 Ku

- Manufacturer : COBHAM Satcom, Sea Tel
- Tx Frequency Band: 13.75 - 14.50 GHz
- Rx Frequency Band : 10.70 - 12.75 GHz
- Tx Gain : 40 dBi
- G/T : 18.3 dB/K
- Diameter : 1.03 m
- Characterized (EB-056)



# MARITIME ANTENNAS - GENERIC

SAILOR 900 VSAT 407009B-00500 and  
407009E-00500 (Ku)

- Manufacturer : COBHAM Satcom, Sea Tel
- Tx Frequency Band: 13.75 – 14.50 GHz
- Rx Frequency Band : 10.70 - 12.75 GHz
- Tx Gain : 41.1 dBi
- G/T : 19.9 dB/K
- HPA max : BUC 8W maximum
- Diameter : 1.03 m
- Weight : 126 kg (radome included)
- Characterized



## MARITIME ANTENNAS - GENERIC

---

COBHAM Sailor 900 VSAT w/ BUC 407009A-00500

- Manufacturer : COBHAM Satcom, Sea Tel
- Tx Frequency Band: 13.75 – 14.50 GHz
- Rx Frequency Band : 10.70 - 12.75 GHz
- Tx Gain : 41.9 dBi
- G/T : 19.9 dB/K
- HPA max : BUC 8W maximum
- Diameter : 1.05 m
- Characterized

No available picture

# MARITIME ANTENNAS - GENERIC

## V100NX

- Manufacturer : Intellian Technologies, Inc.
- Tx Frequency Band: 13.75 – 14.50 GHz
- Rx Frequency Band : 10.70 – 12.75 GHz
- Tx Gain : 41.6 dBi
- G/T : 20.04 dB/K
- HPA max : BUC 25W maximum
- Diameter : 1.05 m
- Weight : 113 kg (radome included)
- Characterized



# MARITIME ANTENNAS - GENERIC

V110

- Manufacturer : Intellian Technologies, Inc.
- Tx Frequency Band: 13.75 – 14.50 GHz
- Rx Frequency Band : 12.50 – 12.75 GHz
- Tx Gain : 41.7 dBi
- HPA max : BUC 8W maximum
- Diameter : 1.05 m
- Weight : 139.5 kg (radome included)
- Characterized



# MARITIME ANTENNAS - GENERIC

## ORBIT OrSat AL-7103-Ku Mk II

- Manufacturer : ORBIT Communication Systems Ltd
- Tx Frequency Band: 13.75 – 14.50 GHz
- Rx Frequency Band : 10.95 – 12.75 GHz
- Tx Gain : 42.3 dBi
- HPA max : BUC from 4W, 8W, 16W to 20W maximum
- Diameter : 1.15 m
- Type Approved (EA-A033)





# MARITIME ANTENNAS - GENERIC

## ORBIT OceanTRx4-500 (Ku)

- Manufacturer : ORBIT Communication Systems Ltd
- Tx Frequency Band: 13.75 – 14.50 GHz
- Rx Frequency Band : 10.70 – 12.75 GHz
- Tx Gain : 41.9 dBi
- G/T : 19.4 dB/K
- HPA max : BUC 8W, 16W, 25W and 40W maximum
- Diameter : 1.15 m
- Weight : 215 kg (radome included)
- Characterized



# MARITIME ANTENNAS - GENERIC

---

## SX 5410 Ku Mate

- Manufacturer : MITSUBISHI ELECTRIC CORPORATION
- Tx Frequency Band: 13.75 – 14.50 GHz
- Rx Frequency Band : 10.70 – 12.75 GHz
- Tx Gain : 41.9 dBi
- G/T : 20.5 dB/K
- HPA max : BUC 8W maximum
- Diameter : 1.2 m
- Type Approved (EA-V059)

No available picture

# MARITIME ANTENNAS - GENERIC

## 1.2m Ku II

- Manufacturer : C2SAT communications AB
- Tx Frequency Band: 13.75 – 14.50 GHz
- Rx Frequency Band : 10.70 – 12.75 GHz
- Tx Gain : 42.2 dBi
- G/T : 19.4 dB/K
- HPA max : BUC 8W maximum
- Diameter : 1.2 m
- Characterized



# MARITIME ANTENNAS - GENERIC

## 5009 StdM Mk2

- Manufacturer : Cobham SATCOM, Sea Tel Products
- Tx Frequency Band: 13.75 – 14.50 GHz
- Rx Frequency Band : 10.70 – 12.75 GHz
- Tx Gain : 42.4 dBi
- G/T : 19.3 dB/K
- HPA max : BUC from 4W, 8W, 16W to 40W maximum
- Diameter : 1.2 m
- Weight : 158 kg (radome included)
- Type Approved (EA-V058)



# MARITIME ANTENNAS - GENERIC

## Seatel 6012

- Manufacturer : Cobham SATCOM, Sea Tel Products
- Tx Frequency Band: 13.75 – 14.50 GHz
- Rx Frequency Band : 10.70 – 12.75 GHz
- Tx Gain : 44.3 dBi
- G/T : 21.9 dB/K
- HPA max : BUC from 4W, 8W, 16W to 40W maximum
- Diameter : 1.5 m
- Weight : 158 kg (radome included)
- Characterized



# MARITIME ANTENNAS - GENERIC

## ORBIT OceanTRx7-C

- Manufacturer : ORBIT Communication Systems Ltd
- Tx Frequency Band: 5.850 – 6.425 GHz
- Rx Frequency Band : 3.625 – 4.2 GHz
- Tx Gain : 39.2 dBi
- G/T : 16.5 dB/K
- HPA max : BUC 8W, 16W, 25W, 40W and 50W maximum
- Diameter : 201cm V x 220cm H
- Weight : 590 kg (radome included)



# MARITIME ANTENNAS - GENERIC

---

## ORBIT AL-7107

- Manufacturer : ORBIT Communication Systems Ltd
- Tx Frequency Band: 5.85 – 6.425 GHz
- Rx Frequency Band : 3.625 – 4.20 GHz
- Tx Gain : 38.3 dBi
- G/T : 17.9 dB/K
- HPA max : BUC 40W maximum
- Diameter : 201x220 cm
- Characterized

No available picture

# MARITIME ANTENNAS

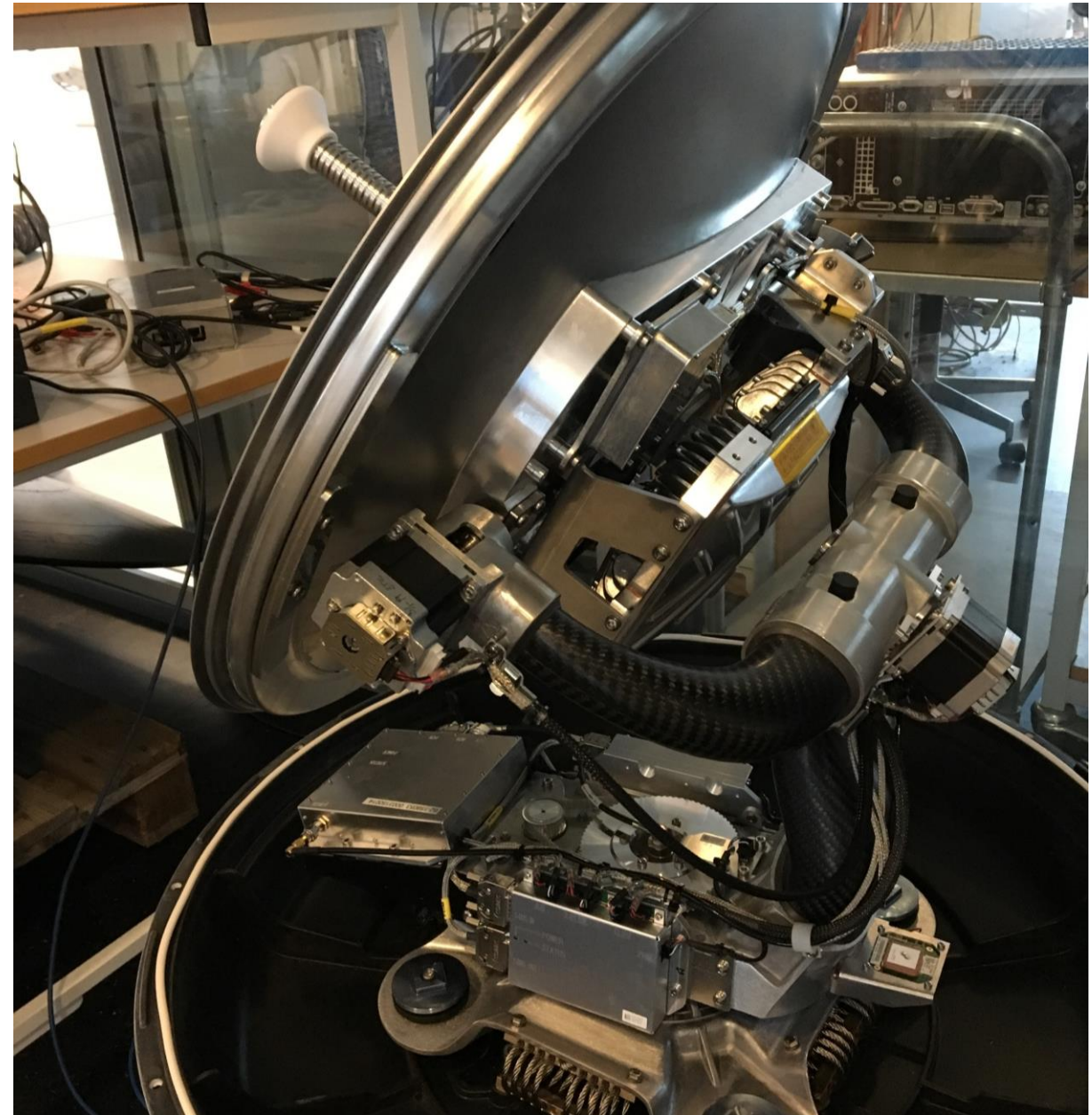
## *b) Broadband antennas*



# MARITIME ANTENNAS - BROADBAND

## COBHAM Sailor 600 Ka equipped with Viasat PTRIA

- Manufacturer : COBHAM Satcom, Sea Tel
- Tx Frequency Band: 29.50 - 30.00 GHz
- Rx Frequency Band : 19.70 - 20.20 GHz
- Tx Gain : 43.0 dBi
- G/T : 15.6 dB/K
- HPA max : BUC 2W maximum
- Diameter : 0.65 m
- Characterized (EB-051)



## MARITIME ANTENNAS - BROADBAND

### COBHAM USAT30 Ka with Integrated ViaSat TRIA

- Manufacturer : COBHAM Satcom, Sea Tel
- Tx Frequency Band: 29.50 - 30.00 GHz
- Rx Frequency Band : 19.70 - 20.20 GHz
- Tx Gain : 43.9 dBi
- G/T : 16.7 dB/K
- HPA max : BUC 2W maximum
- Diameter : 0.75 m
- Weight : 60 kg
- Characterized (EB-029)



# MARITIME ANTENNAS - BROADBAND

Skytech BB75KA 470NM-001-KA075-E1  
with Integrated ViaSat mTRIA

- Manufacturer : Skytech Italia SRL
- Tx Frequency Band: 29.50 - 30.00 GHz
- Rx Frequency Band : 19.70 - 20.20 GHz
- Tx Gain : 44 dBi
- G/T : 17.0 dB/K
- HPA max : BUC 2W maximum
- Diameter : 0.75 m – without radome
- Characterized (EB-026)



## MARITIME ANTENNAS - BROADBAND

### COBHAM Sailor 900 Ka equipped with Viasat PTRIA

- Manufacturer : COBHAM Satcom, Sea Tel
- Tx Frequency Band: 29.50 - 30.00 GHz
- Rx Frequency Band : 19.70 - 20.20 GHz
- Tx Gain : 47.1 dBi
- G/T : 19.7 dB/K
- HPA max : BUC 2W maximum
- Diameter : 1.03 m
- Characterized (EB-052)



# INTERACTIVE SATELLITE TERMINALS

## INTERACTIVE SERVICES

---

Fuba 60 cm w/ feedhorn Azure Shine & Smart LNB EGATEL 2.5

- Manufacturer : TELE SYSTEM DIGITAL SRL
- Tx Frequency Band: 13.75 – 14.50 GHz
- Rx Frequency Band : 10.70 – 12.75 GHz
- Tx Gain : 37.2 dBi
- G/T : 16 dB/K
- HPA max : Smart LNB 1W
- Diameter : 0.60 m
- Characterized (EI-003)

No available picture

# INTERACTIVE SERVICES

## Fuba 80 w/ feedhorn Azure Shine & Smart LNB EGATEL 2.5

- Manufacturer : TELE SYSTEM DIGITAL SRL
- Tx Frequency Band: 13.75 – 14.50 GHz
- Rx Frequency Band : 10.70 – 12.75 GHz
- Tx Gain : 38.6 dBi
- G/T : 16 dB/K
- HPA max : Smart LNB 1W
- Diameter : 0.72 m
- Weight : 7.95 kg
- Characterized (EI-004)



## INTERACTIVE SERVICES

### Emme Esse 74 cm w/ Smart LNB EGATEL 2.5

- Manufacturer : EMME ESSE SpA
- Tx Frequency Band: 13.75 – 14.50 GHz
- Rx Frequency Band : 10.70 – 12.75 GHz
- Tx Gain : 38.2 dBi
- G/T : 16.8 dB/K
- HPA max : Smart LNB 1W
- Diameter : 0.74m H x 0.80m V
- Characterized (EI-005)





# INTERACTIVE SERVICES

## Sinuta 72SA w/ Smart LNB AYECKA

- Manufacturer : SINUTA
- Tx Frequency Band: 13.75 – 14.50 GHz
- Rx Frequency Band : 10.70 – 12.75 GHz
- Tx Gain : 38.9 dBi
- G/T : 16.6 dB/K
- HPA max : Smart LNB 1W
- Diameter : 0.75m H x 0.80m V
- Characterized (EI-006)



# INTERACTIVE SERVICES

## Sinuta VF075SMART01S w/ Smart LNB EGATEL 2.5

- Manufacturer : SINUTA
- Tx Frequency Band: 13.75 – 14.50 GHz
- Rx Frequency Band : 10.70 – 12.75 GHz
- Tx Gain : 38.8 dBi
- G/T : 16.8 dB/K
- HPA max : Smart LNB 1W
- Diameter : 0.75m H x 0.80m V
- Characterized (EI-002)



# INTERACTIVE SERVICES

---

## 90 DR

- Manufacturer : MAEC-VISIOSAT
- Tx Frequency Band: 13.75 – 14.50 GHz
- Rx Frequency Band : 10.70 – 12.75 GHz
- Tx Gain : 40.1 dBi
- Diameter : 0.9 m
- Type Approved (EA-A025)

No available picture

## INTERACTIVE SERVICES

---

### Winegard DS-7401 w/ Smart LNB EGATEL 2.5

- Manufacturer : Egatel
- Tx Frequency Band: 13.75 – 14.50 GHz
- Rx Frequency Band : 10.70 – 12.75 GHz
- Tx Gain : 38.25 dBi
- G/T : 16.7 dB/K
- HPA max : Smart LNB 1W
- Diameter : 0.91m H x 0.63m V
- Characterized (EI-001)

No available picture

## INTERACTIVE SERVICES

---

GV-A0XX-6200-00 with Feed Model: 07-0705-4007, plus OMT v 3.0 from Egatel

- Manufacturer : Azure Shine International Inc.
- Tx Frequency Band: 13.75 – 14.50 GHz
- Rx Frequency Band : 10.70 – 12.50 GHz
- Tx Gain : 41.7 dBi
- G/T : 13.5 dB/K
- HPA max : Smart LNB 1W
- Diameter : 1 m
- Characterized (EI-007)

No available picture

# INTERACTIVE SERVICES

---

120 DR

- Manufacturer : MAEC-VISIOSAT
- Tx Frequency Band: 13.75 – 14.50 GHz
- Rx Frequency Band : 10.70 – 12.75 GHz
- Tx Gain : 42.7 dBi
- HPA max : BUC 3W maximum
- Diameter : 1.2 m
- Type Approved (EA-A028)

No available picture

# INTERACTIVE SERVICES

---

## 120 EMIT

- Manufacturer : MAEC-VISIOSAT
- Tx Frequency Band: 14.00 – 14.50 GHz
- Rx Frequency Band : 10.70 – 12.75 GHz
- Tx Gain : 42.8 dBi
- HPA max : BUC 3W maximum
- Diameter : 1.2 m
- Type Approved (EA-A029)

No available picture

# AIRCRAFT ANTENNAS



# AIRCRAFT ANTENNAS

## ViaSat VR-18C (Ku)

- Manufacturer : ViaSat Inc
- Tx Frequency Band: 14.00 – 14.50 GHz
- Rx Frequency Band : GHz
- Tx Gain : dBi
- G/T : 11.6 dB/K
- Diameter : 0.44 m
- Weight : 12 kg
- Characterized



# AIRCRAFT ANTENNAS

## D-ATKS Ku band Satcom 37cm antenna (Ku)

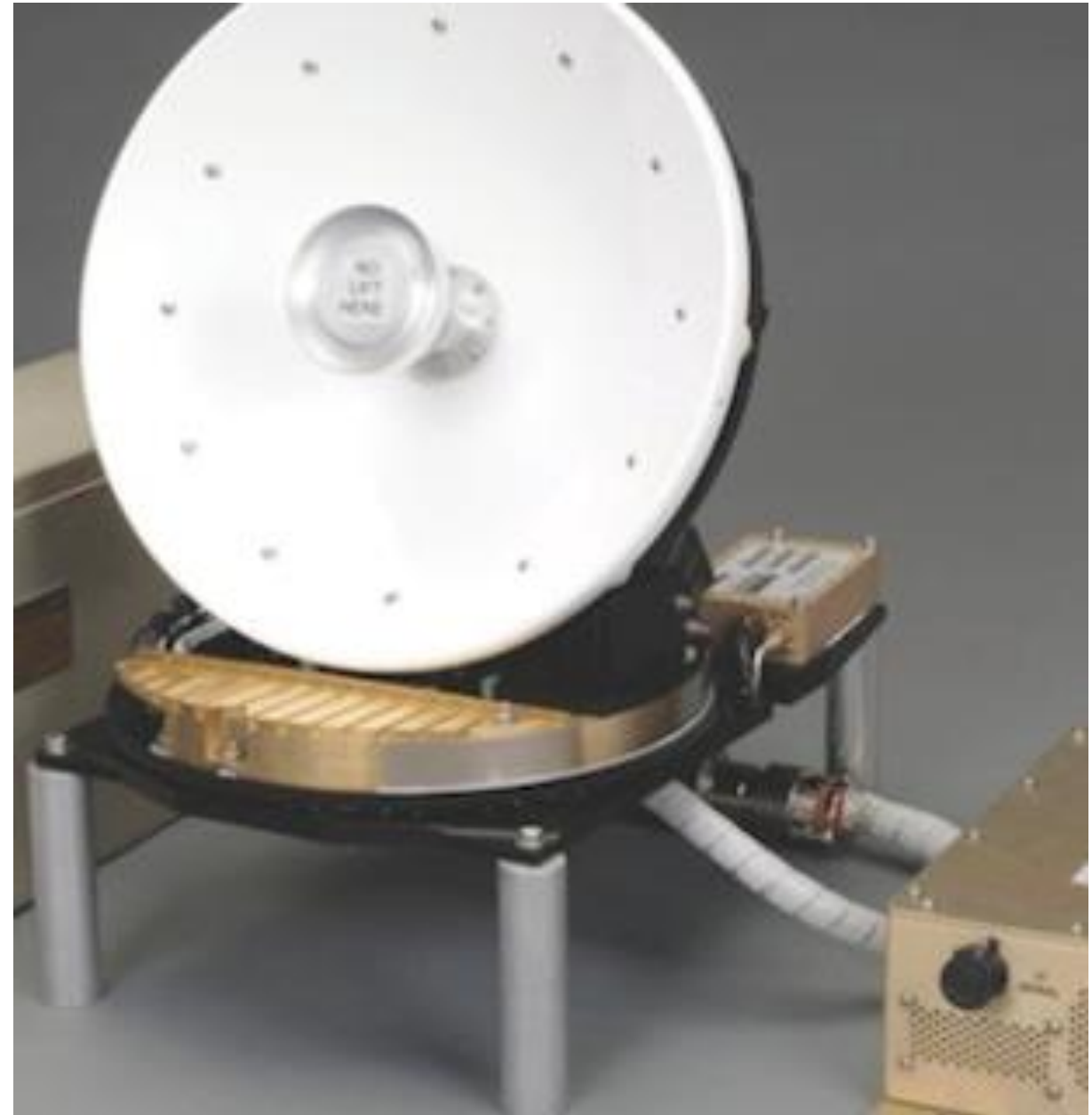
- Manufacturer : IPR – Italiana Ponti Radio SRL
- Tx Frequency Band: 13.75 – 14.50 GHz
- Rx Frequency Band : 10.70 – 12.75 GHz
- Tx Gain : 31.4dBi
- G/T : 10.0 dB/K
- Diameter : 0.37 m
- HPA max : BUC 60W maximum
- Characterized



# AIRCRAFT ANTENNAS

## ViaSat VR-12 (Ka)

- Manufacturer : ViaSat Inc
- Tx Frequency Band: 29.50 - 31.00 GHz
- Rx Frequency Band : 19.70 – 21.20 GHz
- G/T : 10.2 dB/K
- Diameter : ? m
- Weight : 12 kg
- Characterized



# AIRCRAFT ANTENNAS

G-12 airborne antenna  
With CPI radome

- Manufacturer : ViaSat Inc
- Tx Frequency Band: 29.50 - 30.00 GHz
- Rx Frequency Band : 19.70 – 21.20 GHz
- Tx Gain : 35 dBi
- G/T : 9 dB/K
- HPA max : 20W maximum
- Diameter : 0.3 m

No available picture